

COLONIES OF BENEVOLENCE

Assistance Process ICOMOS 2018-2019

Document 2, part 2

Kingdom of the Netherlands and Kingdom of Belgium

April 30th, 2019

Index

Colony IV. Ommerschans.

COLONY IV: OMMERSCHANS

MAPS:

MAP 1 - PHASE 0, BEFORE 1819, DEVELOPMENT EVOLUTION

MAP 2 - PHASE 1, 1819 -1859, DEVELOPMENT EVOLUTION

MAP 3 - PHASE 1, 1819 -1859, FUNCTIONAL EVOLUTION

MAP 4 - PHASE 2, 1860 -1918, DEVELOPMENT EVOLUTION

MAP 5 - PHASE 2, 1860 -1918, FUNCTIONAL EVOLUTION

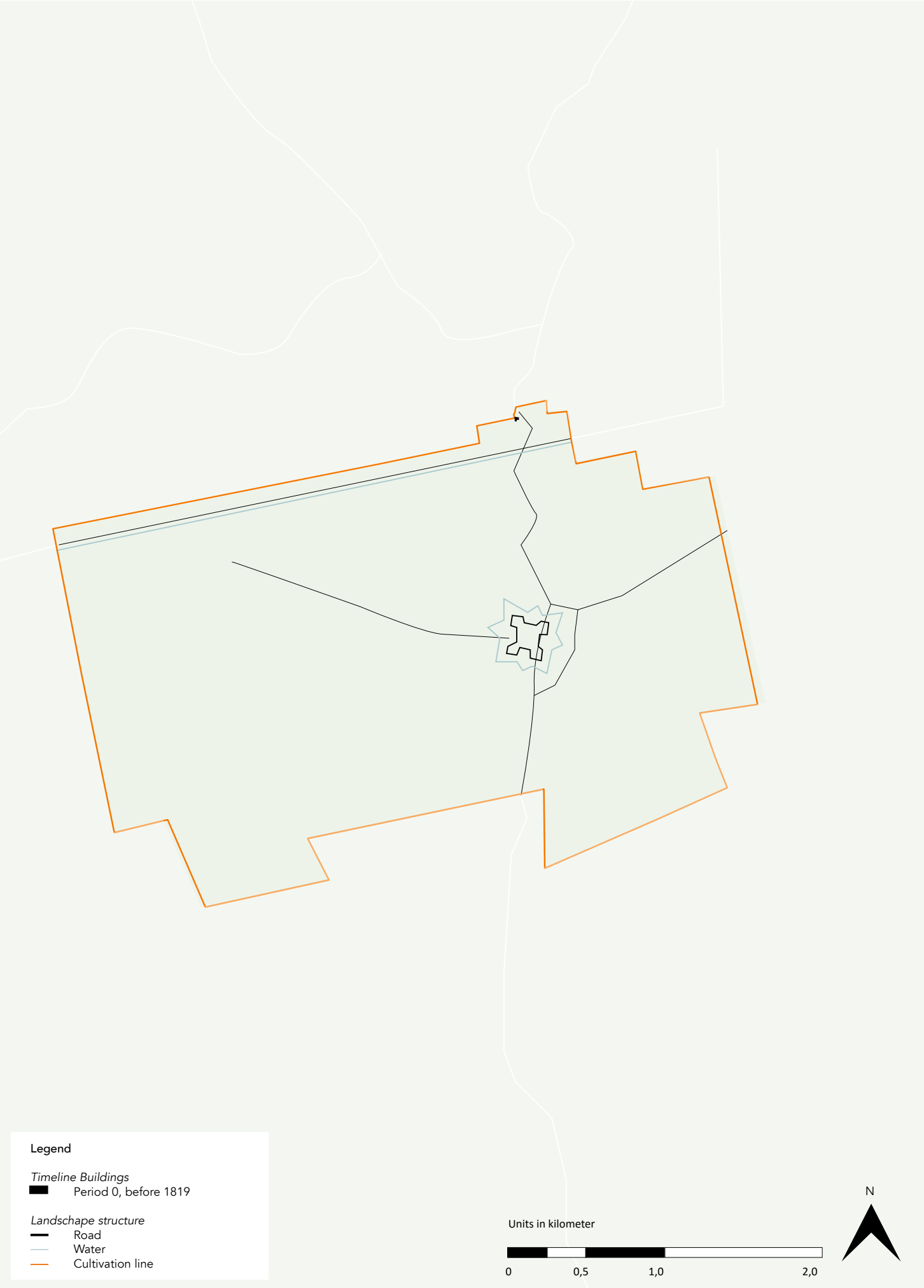
MAP 6 - PHASE 3, 1919 -1933, DEVELOPMENT EVOLUTION

MAP 7 - PHASE 3, 1919 -1933, FUNCTIONAL EVOLUTION

MAP 8 - PHASE 4, 1934 - PRESENT, DEVELOPMENT EVOLUTION

MAP 9 - PHASE 4, 1934 - PRESENT, FUNCTIONAL EVOLUTION

MAP 10 - PRESENT DEVELOPMENT EVOLUTION WITH FUNCTIONAL CATEGORIES





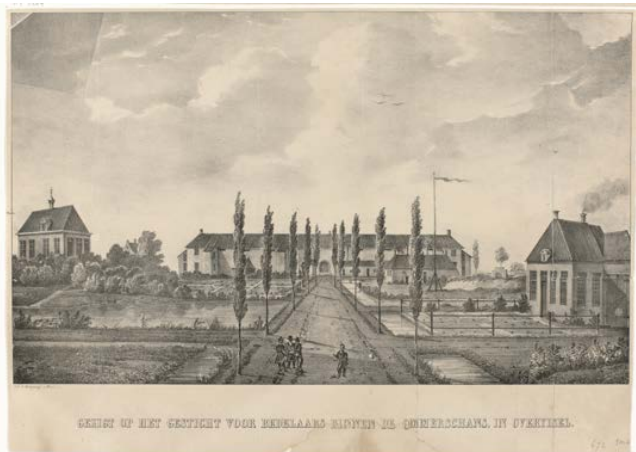
The outlines of the disappeared buildings around the fortress area have been ereased in order to increase the readability of this map



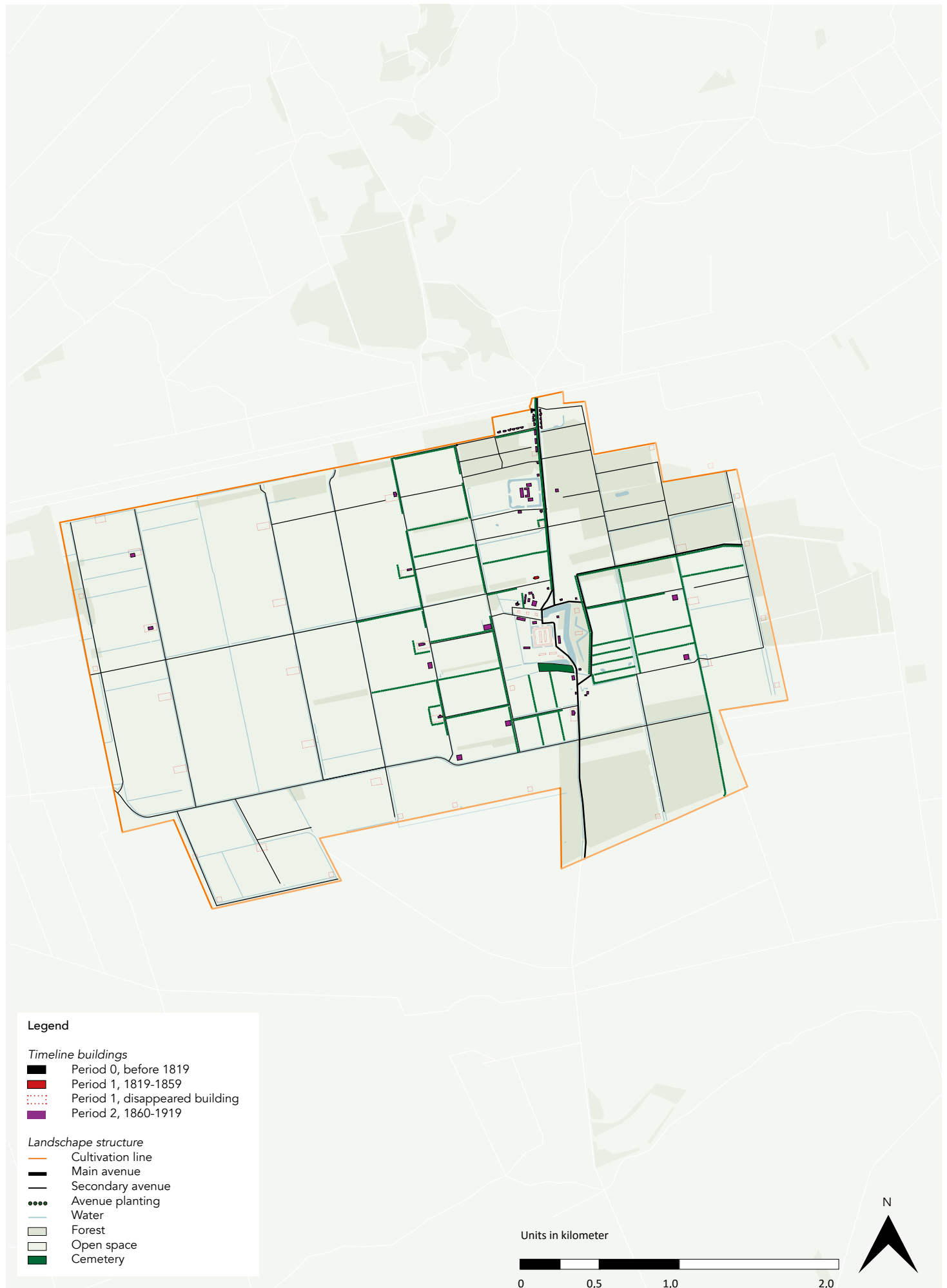
Ref. Nr.	Historical Use	Building Year
1	Religious building	1845
4	Institution	1820
8	Farm	1820
39	Central facilities	1819
33	Director's house	1800



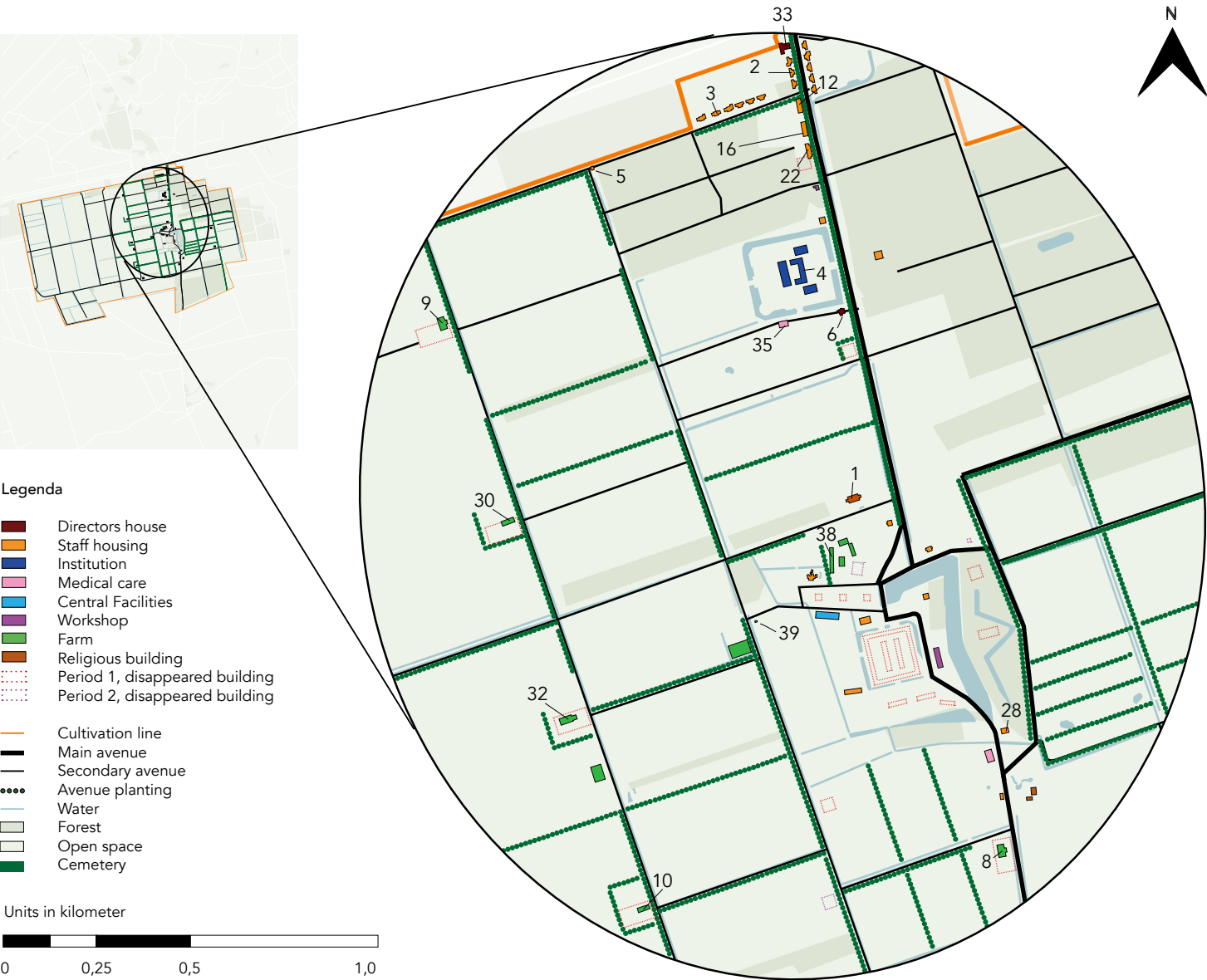
1. Church



4. Institution for beggars



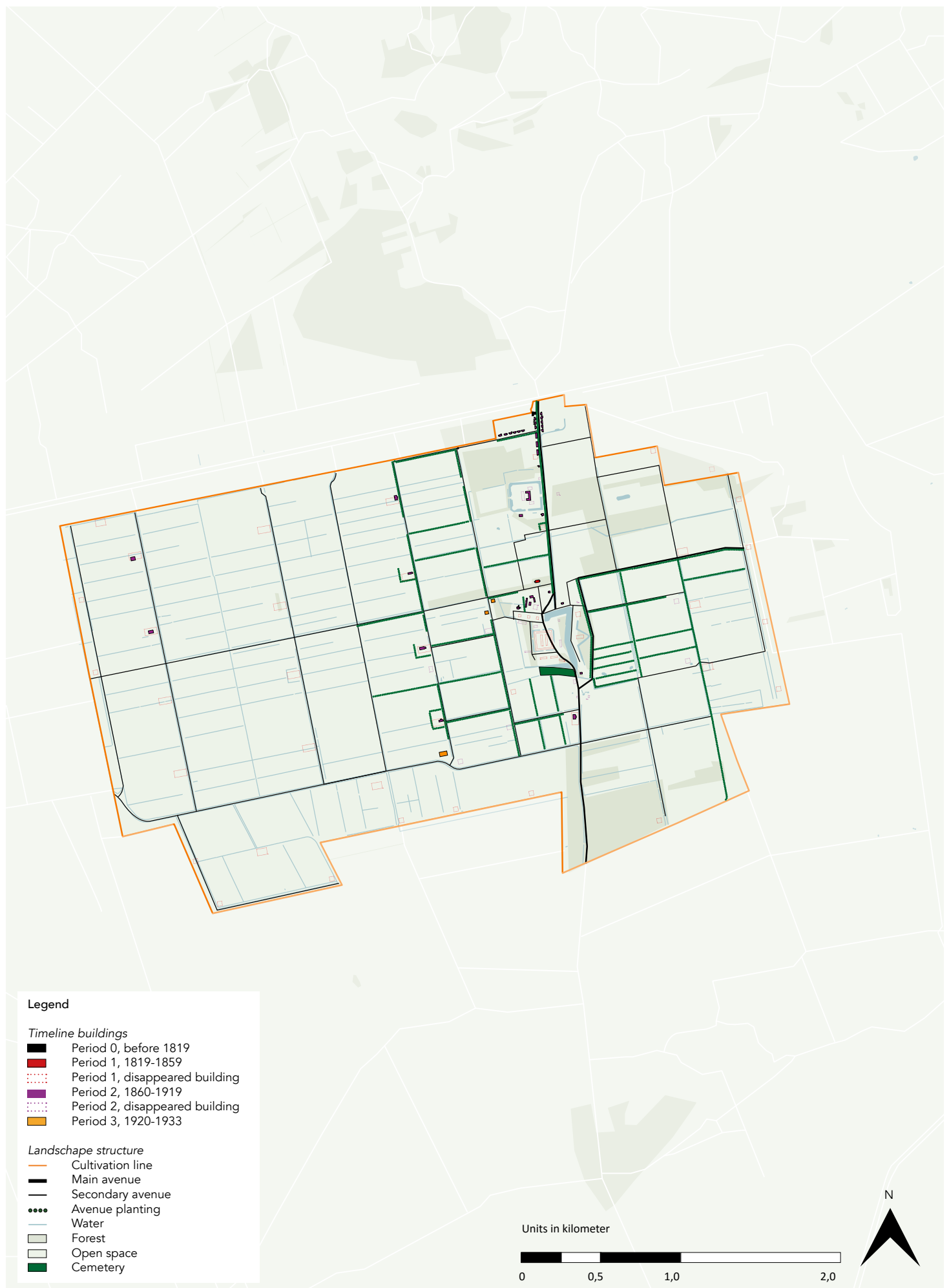
The outlines of the disappeared buildings around the fortress area have been erased in order to increase the readability of this map



Ref. Nr.	Historical Use	Building Year
1	Religious building	1845
2	Staff housing	1910
3	Staff housing	1913 - 1916
4	Institution	1894
6	Director's house	1894
8	Farm	1874
9	Farm	1874
10	Farm	1874
22	Staff housing	1894
28	Staff housing	1865
30	Farm	1875
32	Farm	1885
33	Director's house	1800
35	Medical care	1909
38	Farm	1885 / 1909
39	Central facilities	1819



8. Farm nr. 4



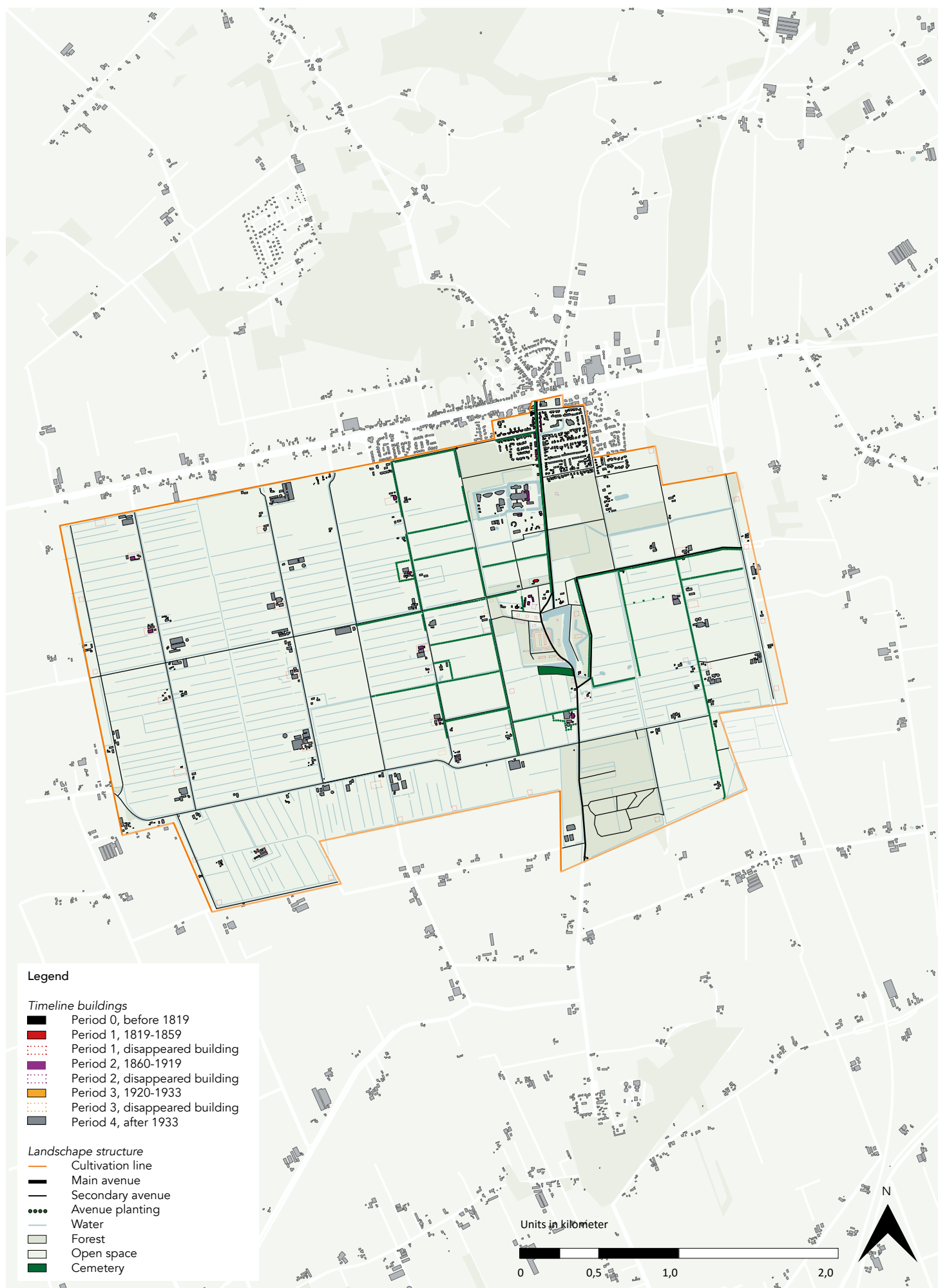
The outlines of the disappeared buildings around the fortress area have been erased in order to increase the readability of this map



Ref. Nr.	Historical Use	Building Year
1	Religious building	1845
2	Staff housing	1910
3	Staff housing	1913 - 1916
4	Institution	1894
6	Director's house	1894
8	Farm	1874
9	Farm	1874
10	Farm	1874
22	Staff housing	1894
28	Staff housing	1865
30	Farm	1875
32	Farm	1885
33	Director's house	1800
35	Medical care	1909
38	Farm	1885 / 1909
39	Central facilities	1819



4. Institution Veldzicht



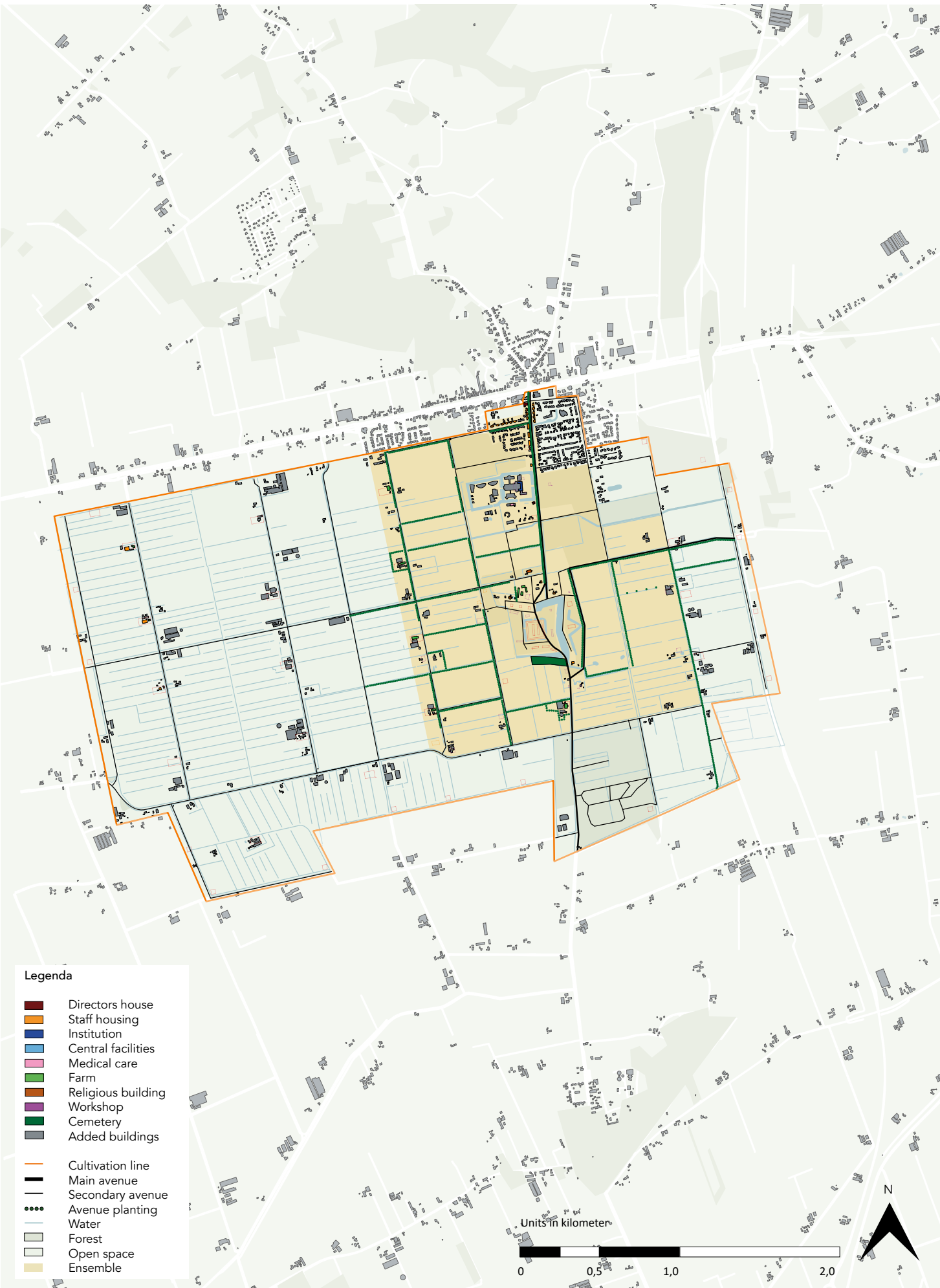
The outlines of the disappeared buildings around the fortress area have been erased in order to increase the readability of this map



Ref. Nr.	Historical Use	Building Year
1	Religious building	1845
2	Staff housing	1910
3	Staff housing	1913 - 1916
4	Institution	1894
5	Staff housing	1870 / 1894
6	Director's house	1894
7	Staff housing	1835
8	Farm	1874
9	Farm	1874
10	Farm	1874
12	Staff housing	1894
16	Staff housing	1894
22	Staff housing	1894
28	Staff housing	1865
30	Farm	1875
32	Farm	1885
34	Staff housing	1901
35	Medical care	1909
36	Staff housing	1901
37	Staff housing	1901
38	Farm	1885 / 1909
39	Central facilities	1819
40	Cemetery	1819



6. Director's house Veldzicht

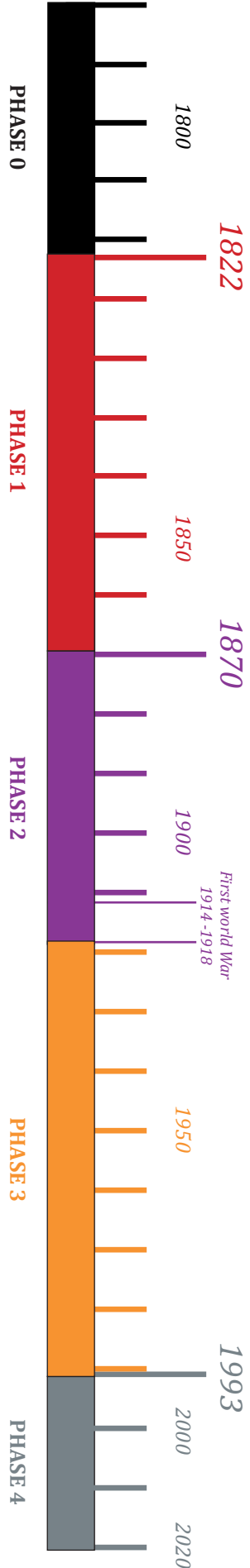


Ref. Nr.	Historical Use	Bouwjaar
1	Religious building	1845
2	Staff housing	1910
3	Staff housing	1913 - 1916
4	Institution	1894
5	Staff housing	1870 / 1894
6	Director's house	1894
7	Staff housing	1835
8	Farm	1874
9	Farm	1874
10	Farm	1874
12	Staff housing	1894
16	Staff housing	1894
22	Staff housing	1894
28	Medical Care	1865
30	Farm	1875
32	Farm	1885
34	Staff housing	1901
35	Medical care	1909
36	Staff housing	1901
37	Staff housing	1901
38	Farm	1885 / 1909
39	Central facilities	1819

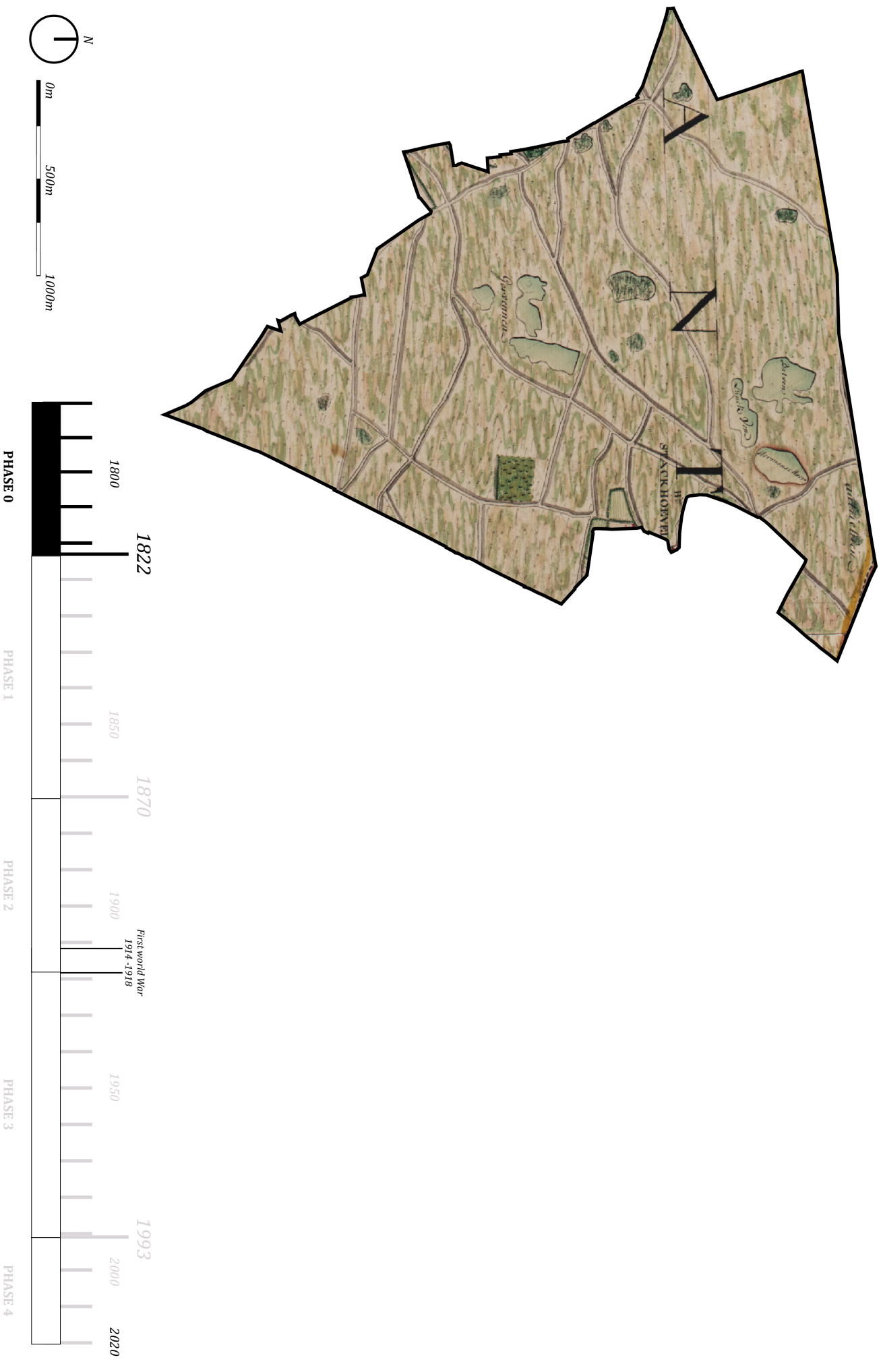
JOURNEY THROUGH TIME COLONY WORTTEL 1822 - PRESENT



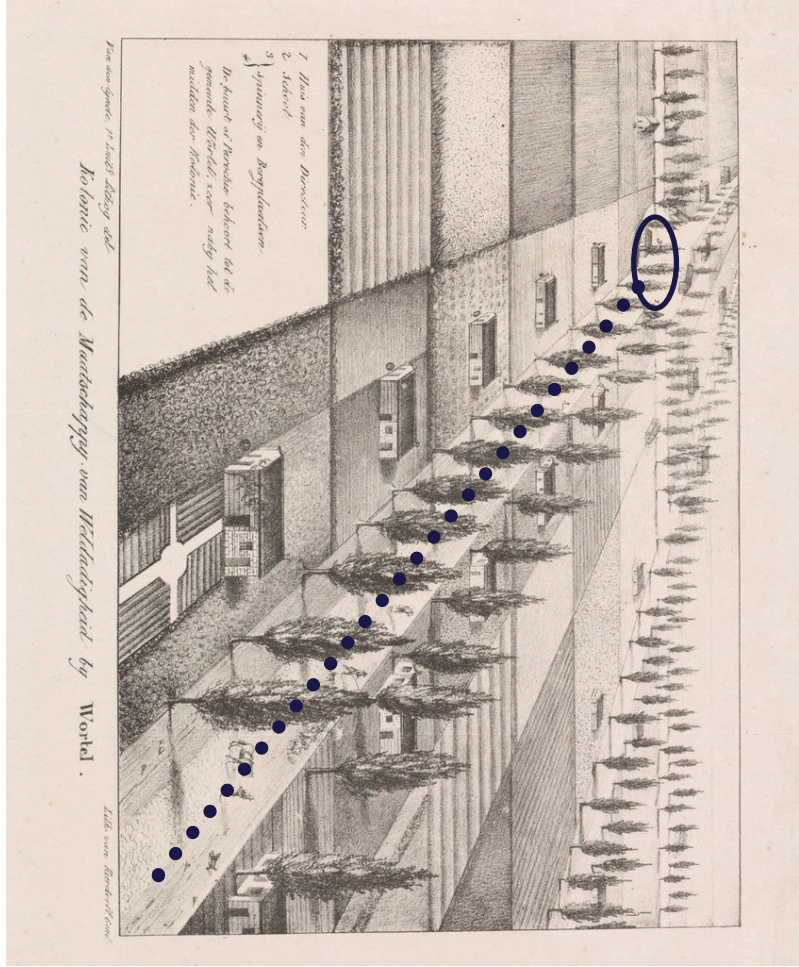
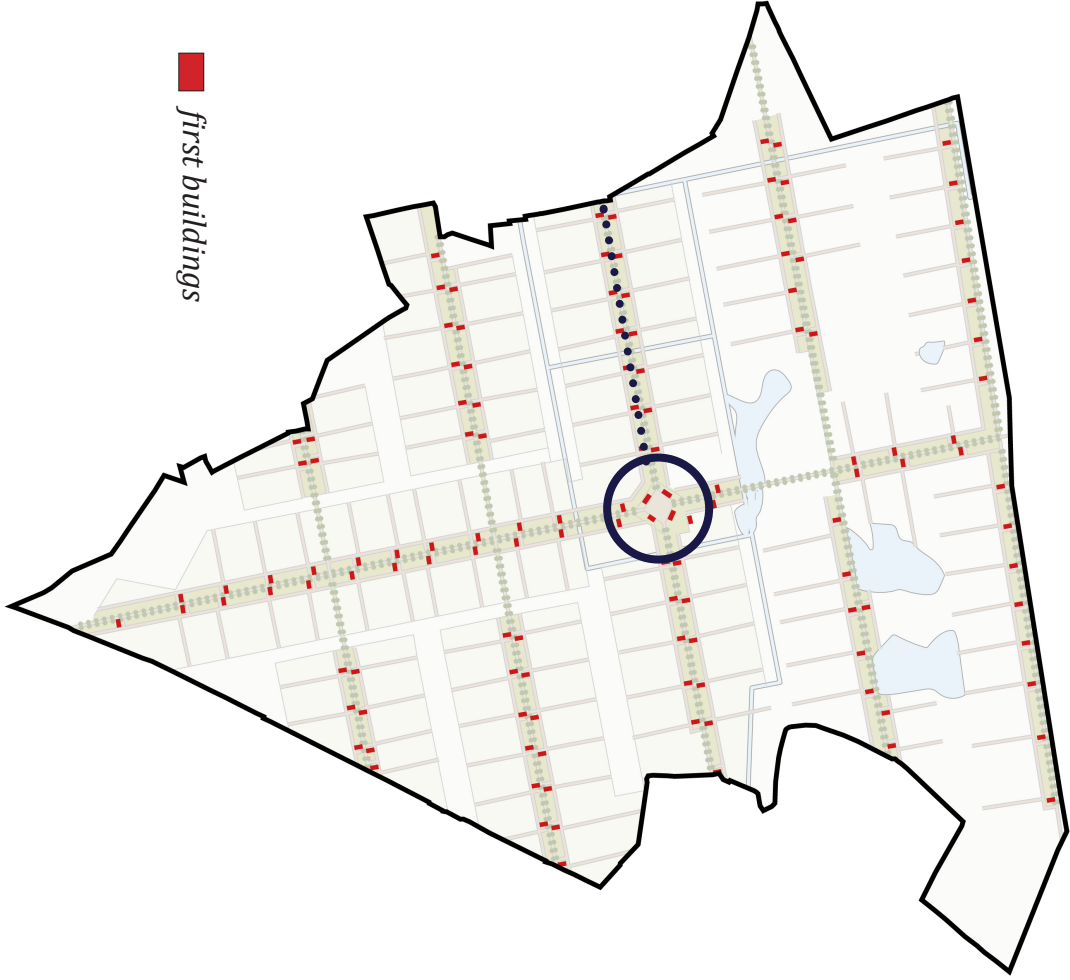
TRANSFORMATION OF COLONY WORTTEL OVER THE YEARS



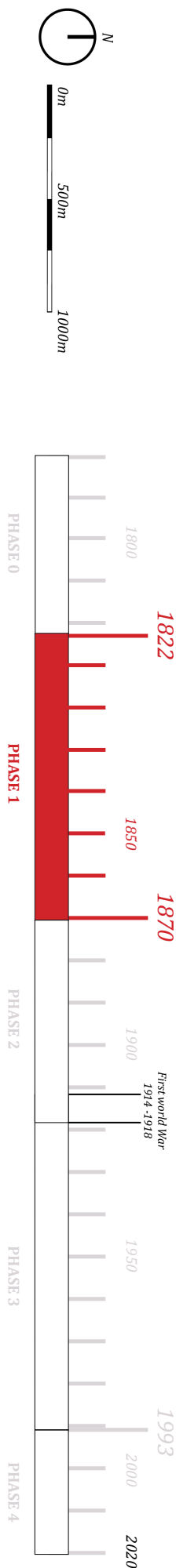
PHASE 0 1780-1822 DEVELOPMENT EVOLUTION



PHASE 1 1822 - 1870 DEVELOPMENT EVOLUTION

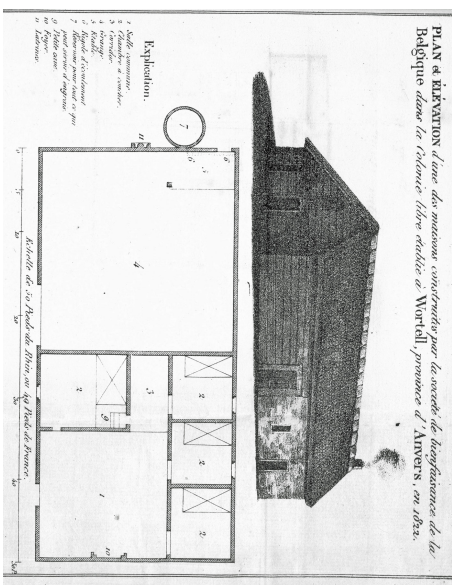


gridstructure with Colony houses on both sides along the main axes

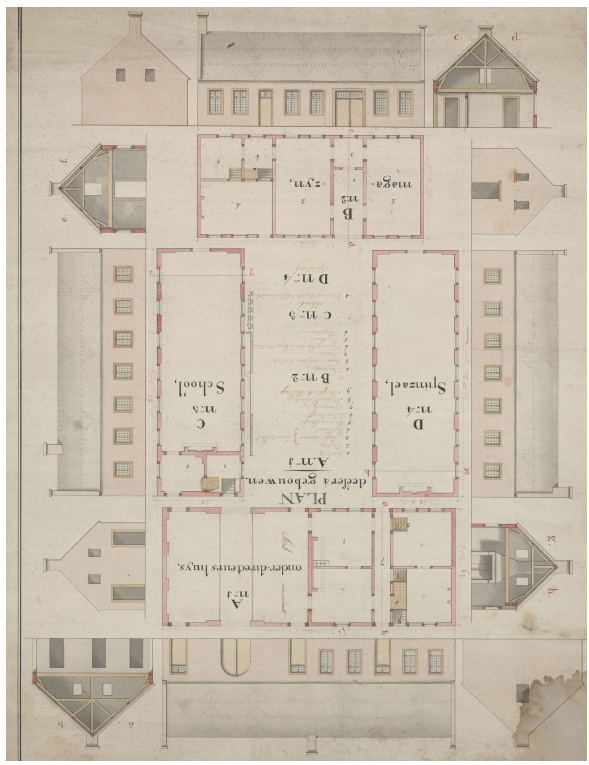


PHASE 1 1822 - 1870 FUNCTIONAL EVOLUTION

- colony houses (family houses)
- government / director house
- school
- workshop



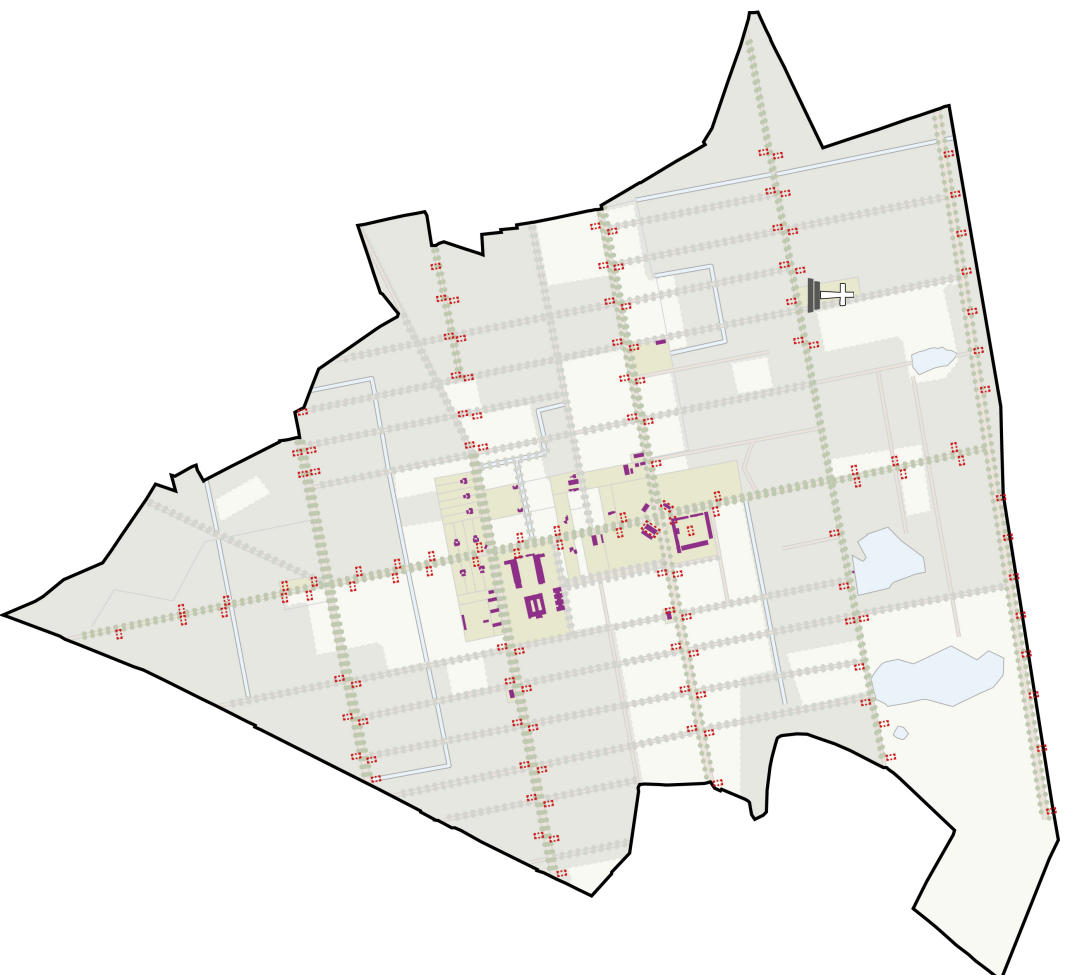
floor plan first colony building



floor plan intersection with 4 main buildings

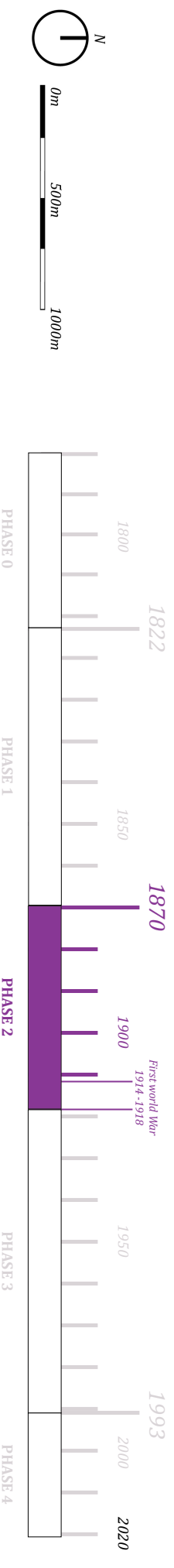
1. assistant Director house
2. school
3. the spinning mill
4. storehouse

PHASE 2 1870 - 1918 DEVELOPMENT EVOLUTION

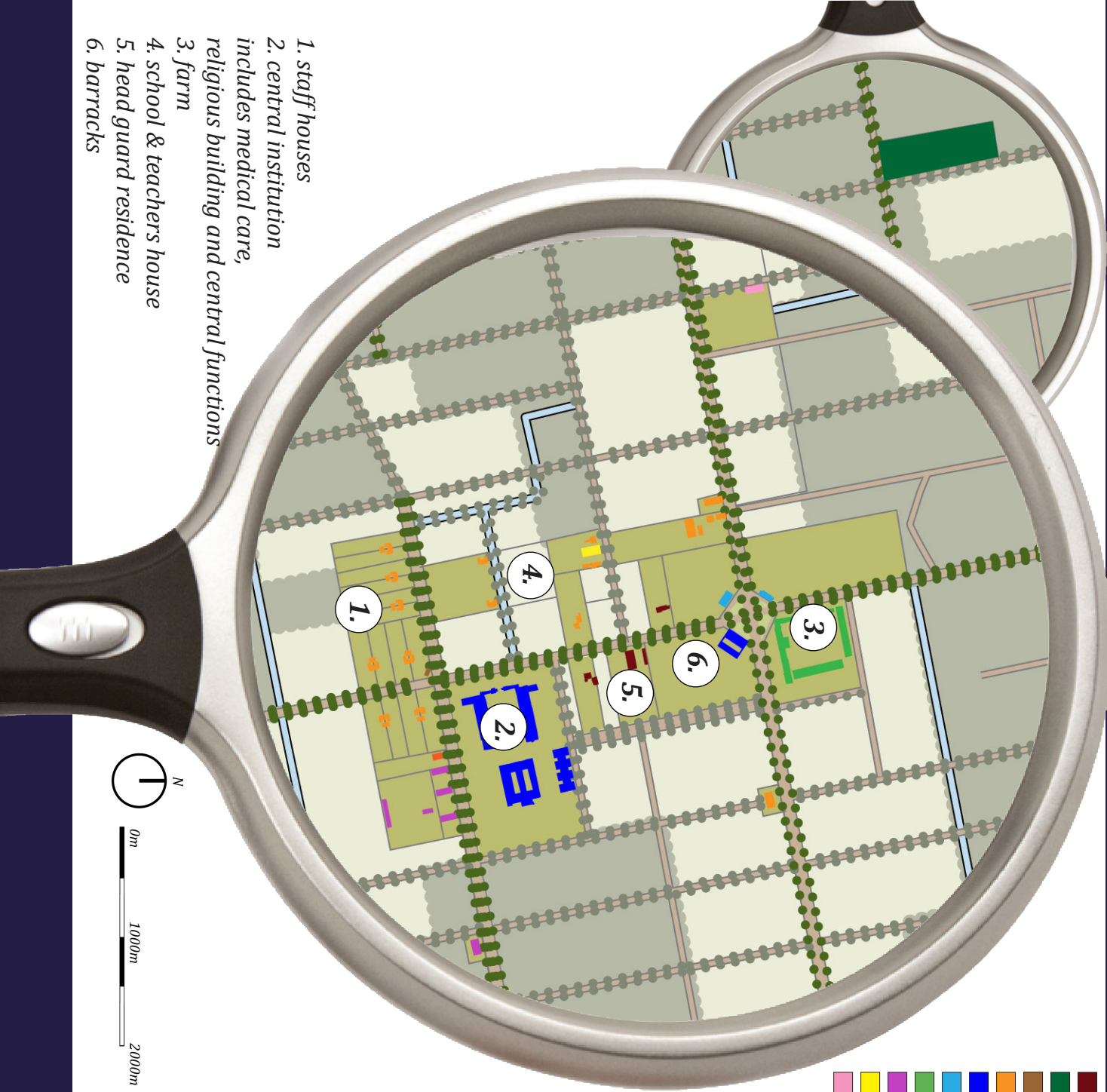


- buildings (1822 - 1870)
- buildings (1870 - 1918)
- demolished buildings from previous period

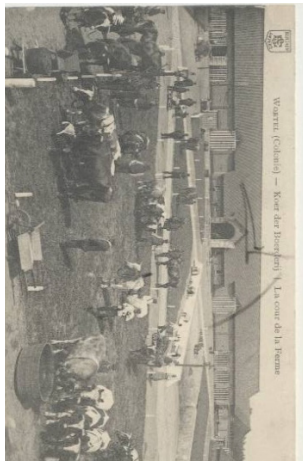
- arise of a square farm subsequently to the former assistant Director house
- arise of staff houses, a central institution and new school
- arise of a barrack at the place of the former school
- almost all Colony houses had disappeared around 1870
- tramstop



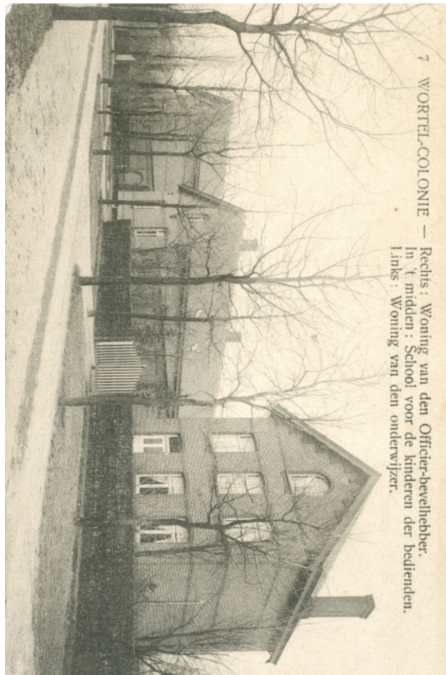
PHASE 2 1870 - 1918 FUNCTIONAL EVOLUTION



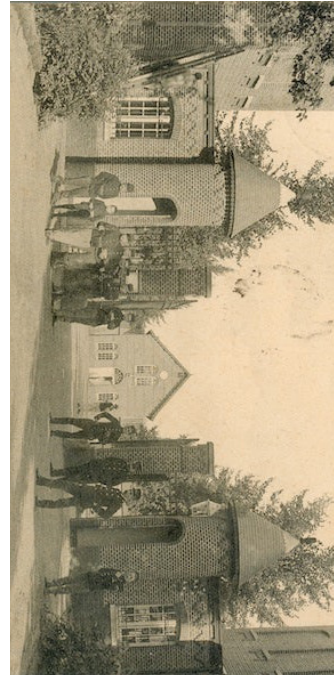
- government- / director house
- cemetery
- tramstop building
- staff houses
- institution
- central facilities
- farm
- workshop
- school
- medical care



3. farm



4. school & teachers house



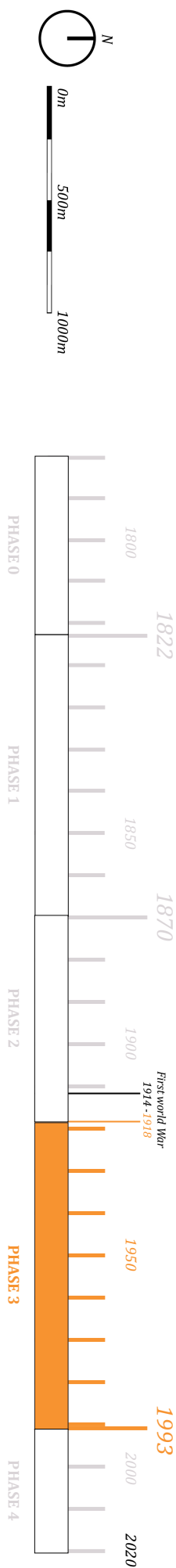
1. staff houses
2. central institution includes medical care, religious building and central functions
3. farm
4. school & teachers house
5. head guard residence
6. barracks

PHASE 3 1918 - 1993 DEVELOPMENT EVOLUTION



- buildings (1822 - 1870)
- buildings (1870 - 1918)
- buildings (1918 - 1993)
- - - demolished buildings from previous period

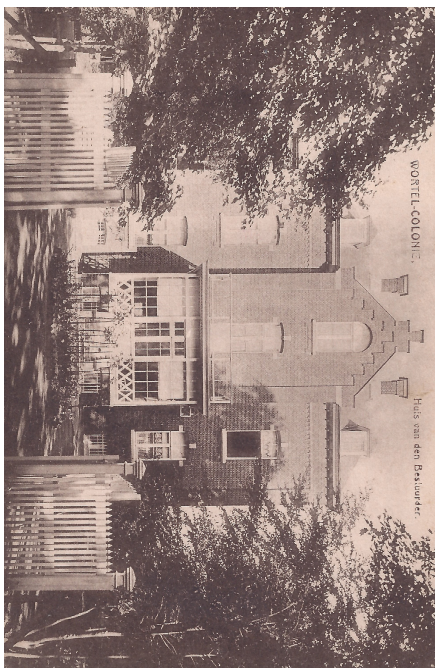
- damage by World War II
 - part of the farm
 - houses and lazaret, hotel at the crossroads demolished
- fire in 1977 in the institution



PHASE 3 1918 - 1993 FUNCTIONAL EVOLUTION



- government- / director house
- cemetery
- tramstop building
- staff houses
- institution
- central facilities
- farm
- workshop
- school



1. director house



2. colony house / tram house

PHASE 4 1993 - PRESENT DEVELOPMENT EVOLUTION



- buildings (1822 - 1870)
- buildings (1870 - 1918)
- buildings (1918 - 1993)
- buildings (1993 - present)
- - - demolished buildings from previous period

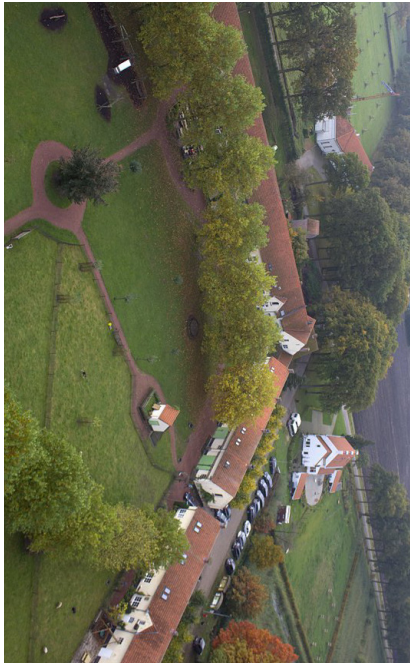
- enlargement of the workshops
- disappearance of the school



PHASE 4 1993 - PRESENT FUNCTIONAL EVOLUTION



function related to the Colony
function not related to the Colony



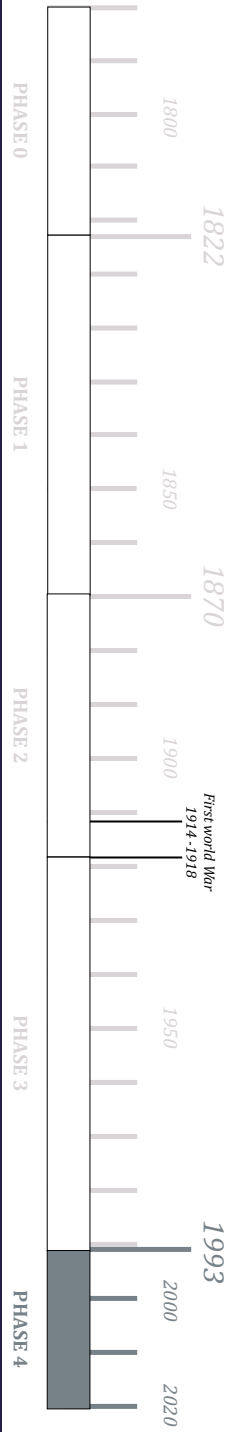
intersection with the 4 main buildings



prison Wortel

PHASE 4 1993 - PRESENT DEVELOPMENT EVOLUTION + DEMOLISHED BUILDINGS

- buildings (1822 - 1870)
- demolished buildings (1822 - 1870)
- buildings (1870 - 1918)
- demolished buildings (1870 - 1918)
- buildings (1918 - 1993)
- demolished buildings (1918 - 1993)
- buildings (1993 - present)



Wortel

Ref. Nr.	Year of build	Historical use
1	1880-1898	staff housing
2	1880-1898	staff housing
3	1880-1898	staff housing
4	1880-1898	staff housing
5	1880-1898	staff housing
6	1880-1898	staff housing
7	1880-1898	staff housing
8	1880-1898	staff housing
9	1880-1898	staff housing
10	1880-1898	staff housing
11	1880-1898	staff housing
12	1880-1898	staff housing
13	1880-1898	staff housing
14	1880-1898	staff housing
15	1882-1890	institution
19	1882-1890	institution - dormitories
	1882-1890	institution - dormitories
	1882-1890	institution - dormitories
	1882-1890	institution - dormitories
	1882-1890	institution - dormitories
	1882-1890	institution - dormitories
	1882-1890	workshop
	1882-1890	workshop
	1882-1890	workshop
	1882-1890	workshop
	1882-1890	workshop
	1882-1890	workshop
30	1890-1899	staff housing
31	1890-1899	staff housing
32	1890-1899	staff housing
33	1882-1890	staff housing - directors house
34	1893	school
35	1901	tramstopbuilding
38	after WW1	workshop
41	1882-1890	farm - northwest wing
42	1882-1890	farm - remains east wing
43	1882-1890	assistant director house
44	1882-1890	farm - south wing
45	1882-1890	farm - north wing
46	1918-1993	farm storage
47	ca 1893-1899	staff housing
48	ca 1893-1899	spinning mill
49	ca 1893-1899	staff housing
50	ca 1890-1899	farm - sheep stable
51	ca 1870-1880	Cemetery
52	ca 1870-1918	building 'Bootjesven'

COLONY VI: VEENHUIZEN

MAPS:

MAP 1 - PHASE 0, BEFORE 1823, DEVELOPMENT EVOLUTION

MAP 2 - PHASE 1, 1823 -1859, DEVELOPMENT EVOLUTION

MAP 3 - PHASE 1, 1823 -1859, FUNCTIONAL EVOLUTION

MAP 4 - PHASE 2, 1860 -1918, DEVELOPMENT EVOLUTION

MAP 5 - PHASE 2, 1860 -1918, FUNCTIONAL EVOLUTION

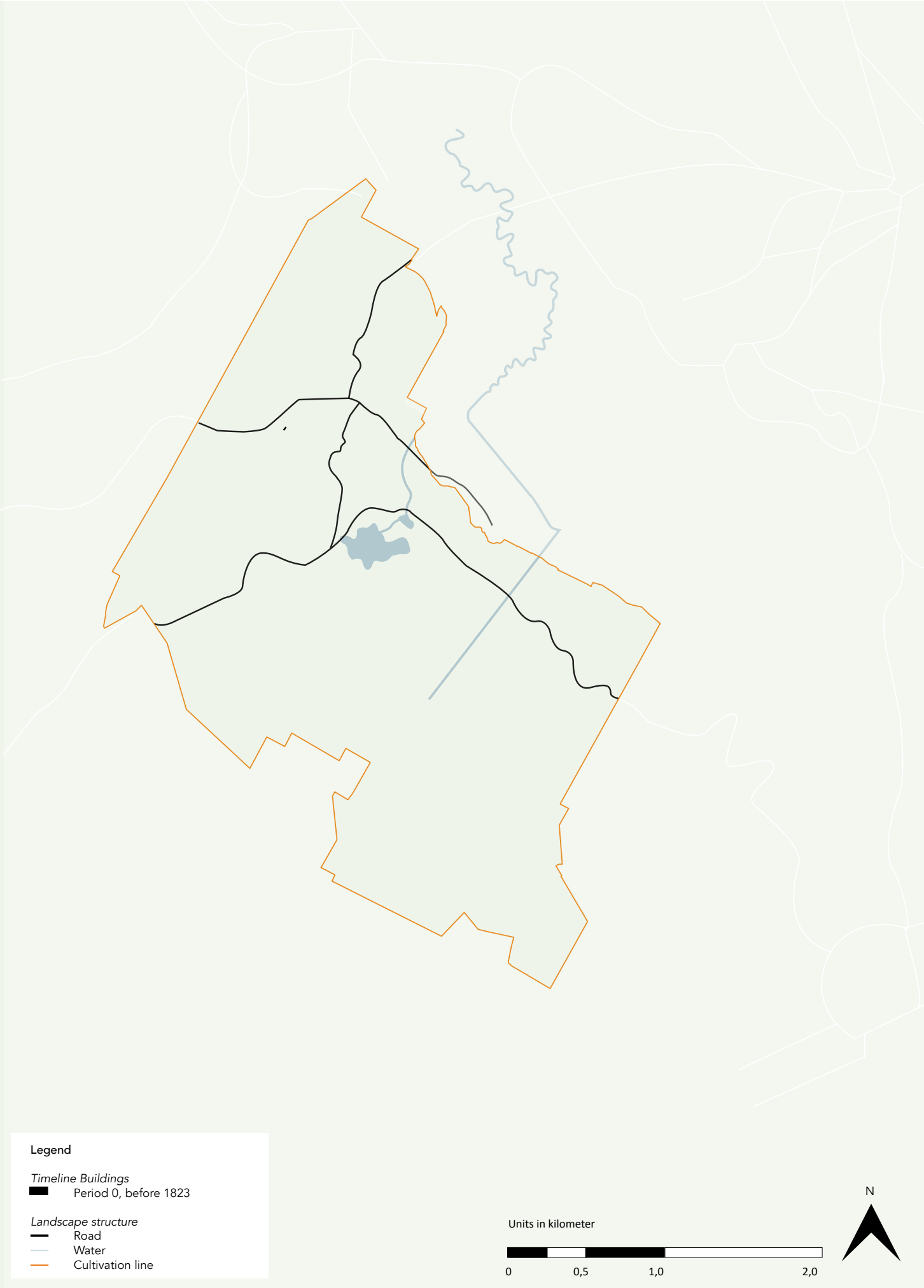
MAP 6 - PHASE 3, 1919 -1953, DEVELOPMENT EVOLUTION

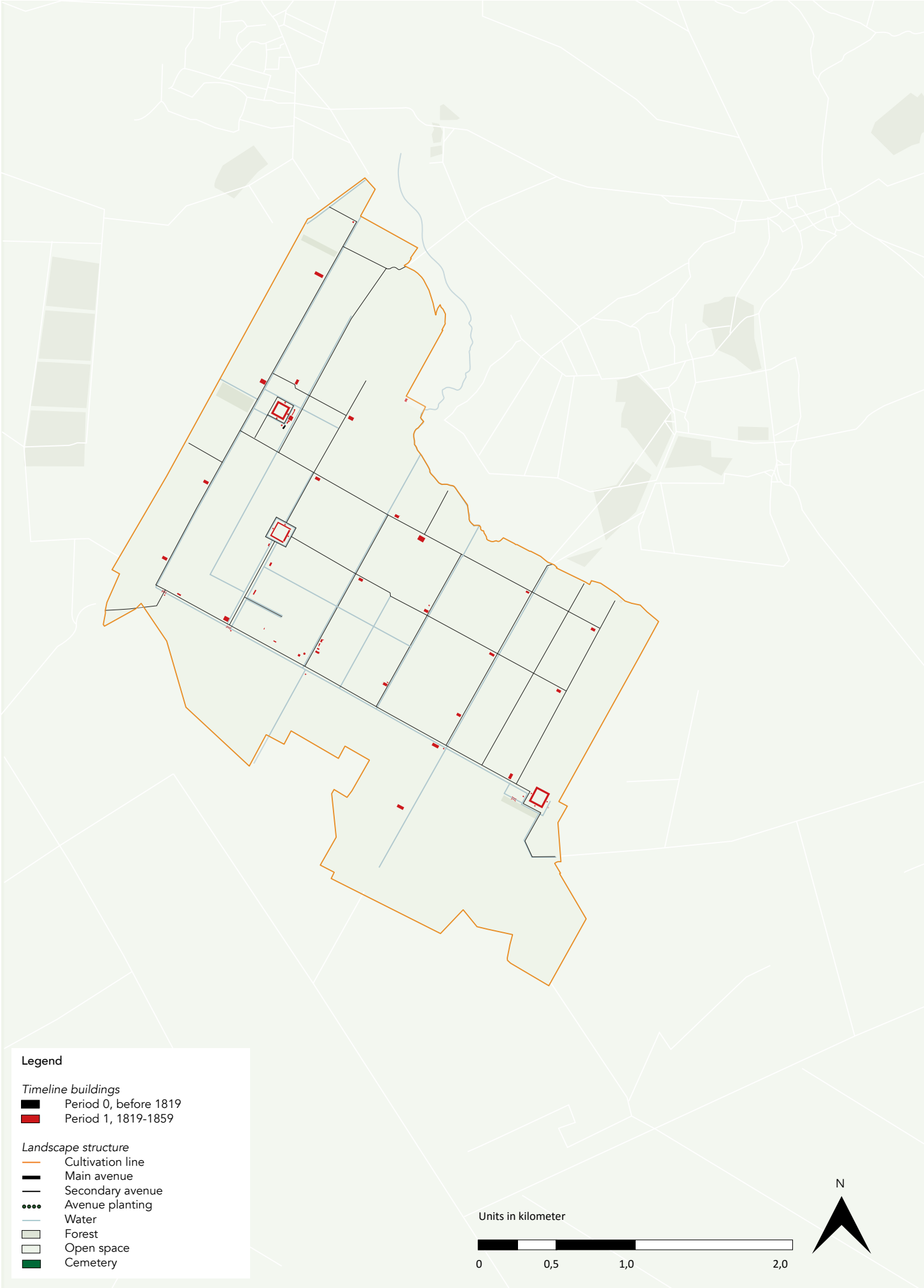
MAP 7 - PHASE 3, 1919 -1953, FUNCTIONAL EVOLUTION

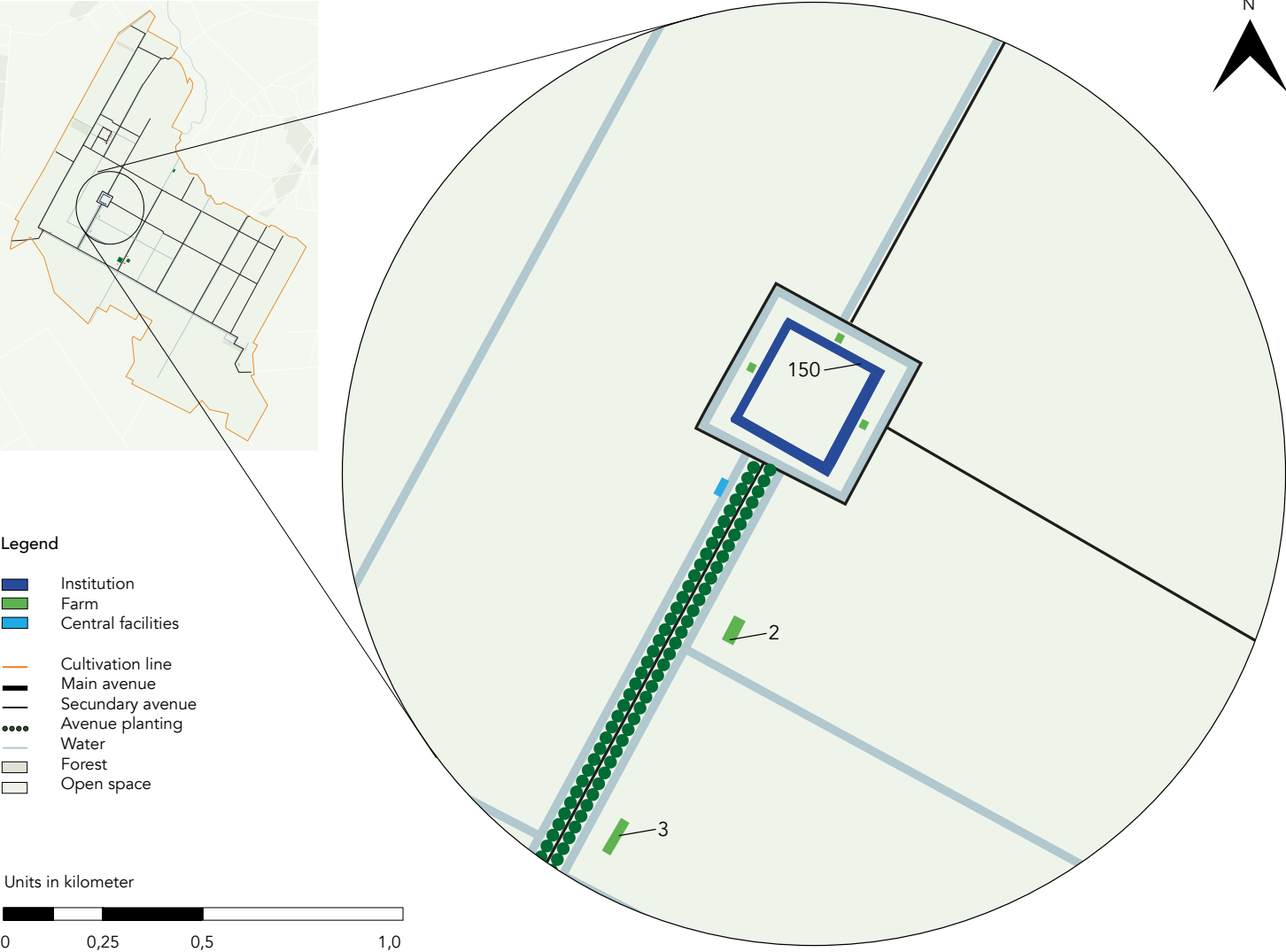
MAP 8 - PHASE 4, 1954 - PRESENT, DEVELOPMENT EVOLUTION

MAP 9 - PHASE 4, 1954 - PRESENT, FUNCTIONAL EVOLUTION

MAP 10 - PRESENT DEVELOPMENT EVOLUTION WITH FUNCTIONAL CATEGORIES







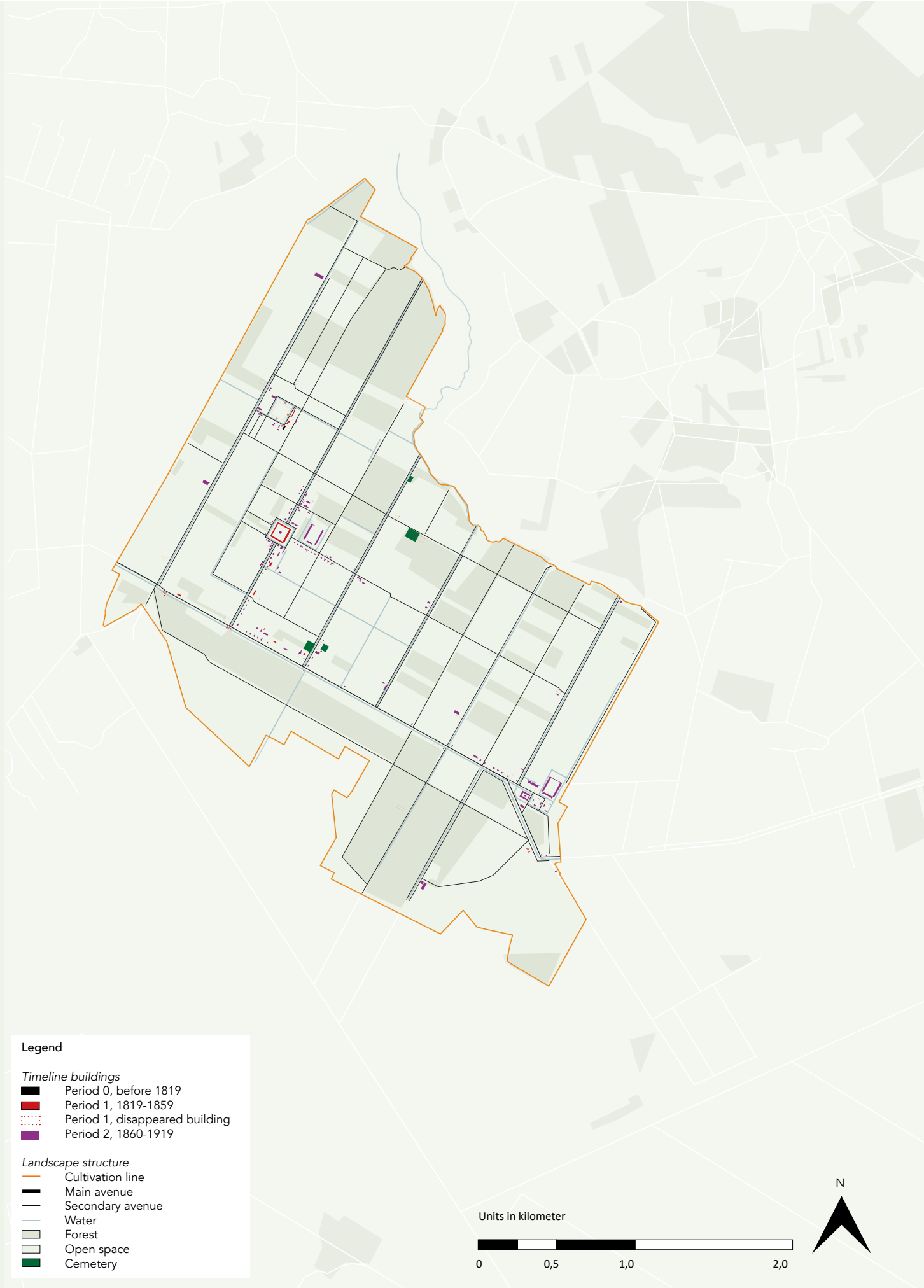
Ref. Nr.	Function	Building Year
2	Farm	1825
3	Farm	1825
150	Institution	1823



150. Second Institution



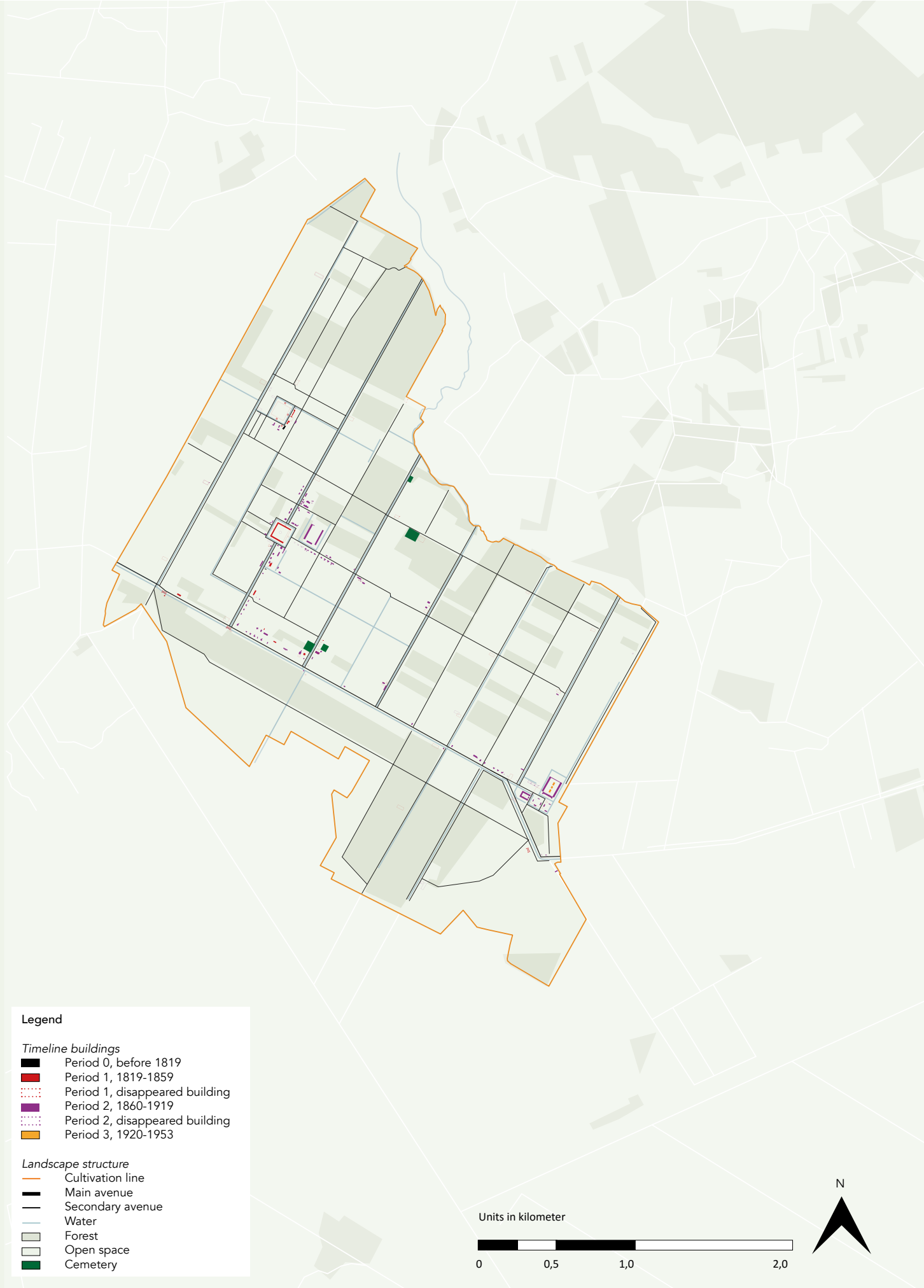
150. Second Institution





32. Farm

Ref. Nr.	Function	Building Year
2	Farm	1825
3	Farm	1825
32	Farm	1890
98	Medical care	1893
135	Staff housing	1910
139	Institution	1900
150	Institution	1823
153	School	1875
160	Central Facility	1912

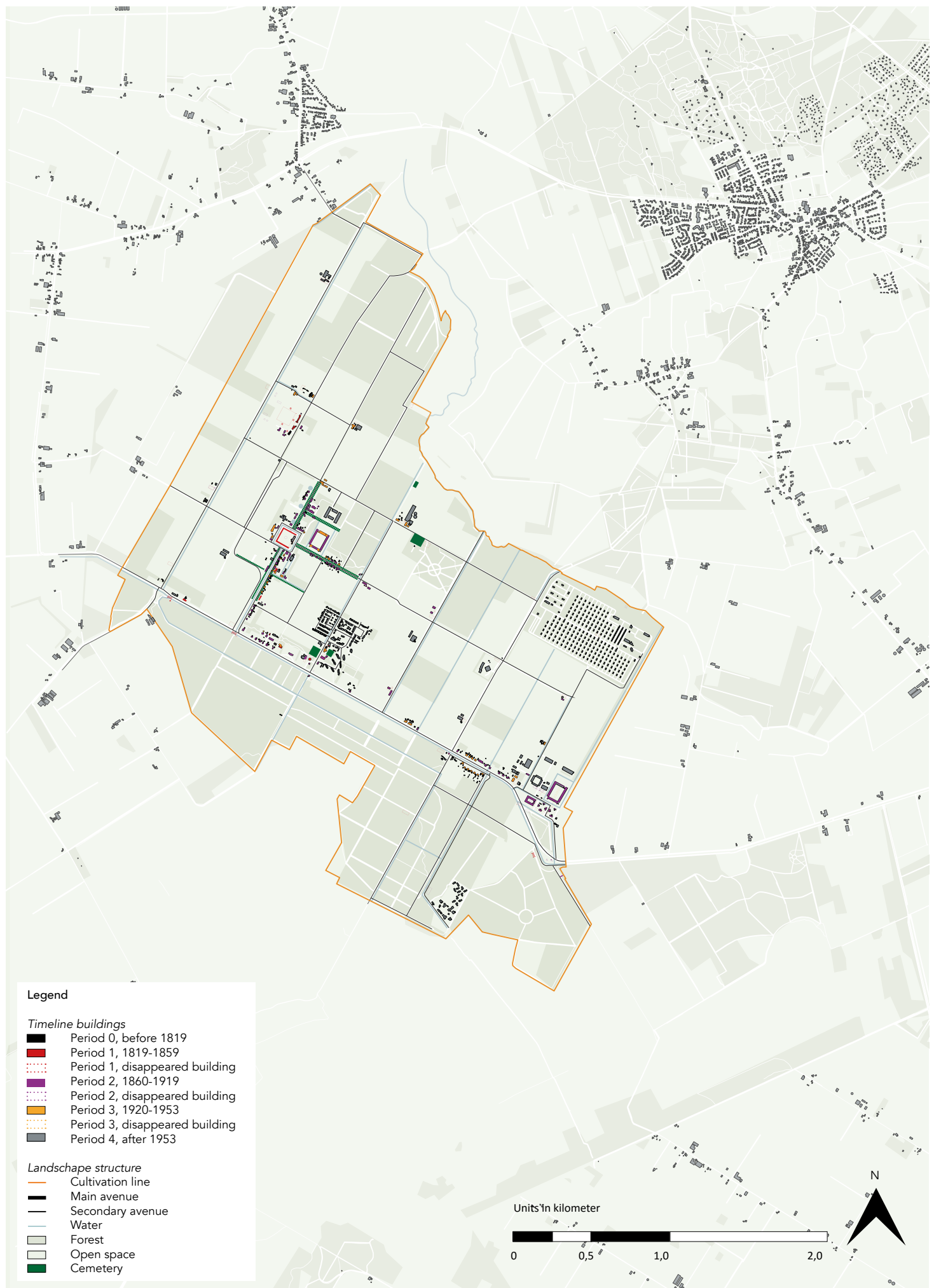


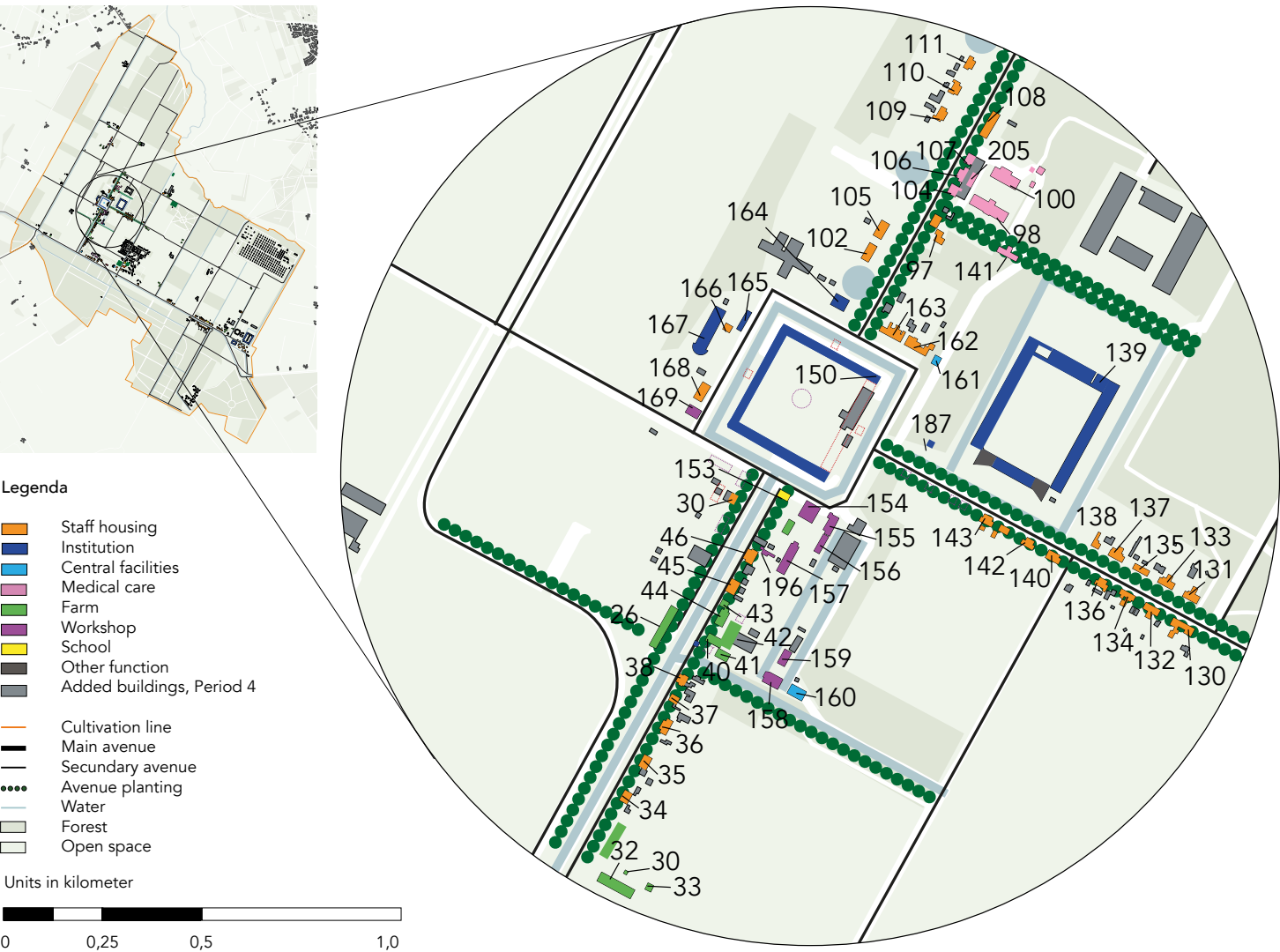


Ref. Nr.	Function	Building Year
2	Farm	1825
3	Farm	1825
32	Farm	1890
36	Staff housing	1919
98	Medical care	1893
135	Staff housing	1910
139	Institution	1900
150	Institution	1823
153	School	1875
160	Central facilities	1912
161	Central facilities	1925



98. Hospital



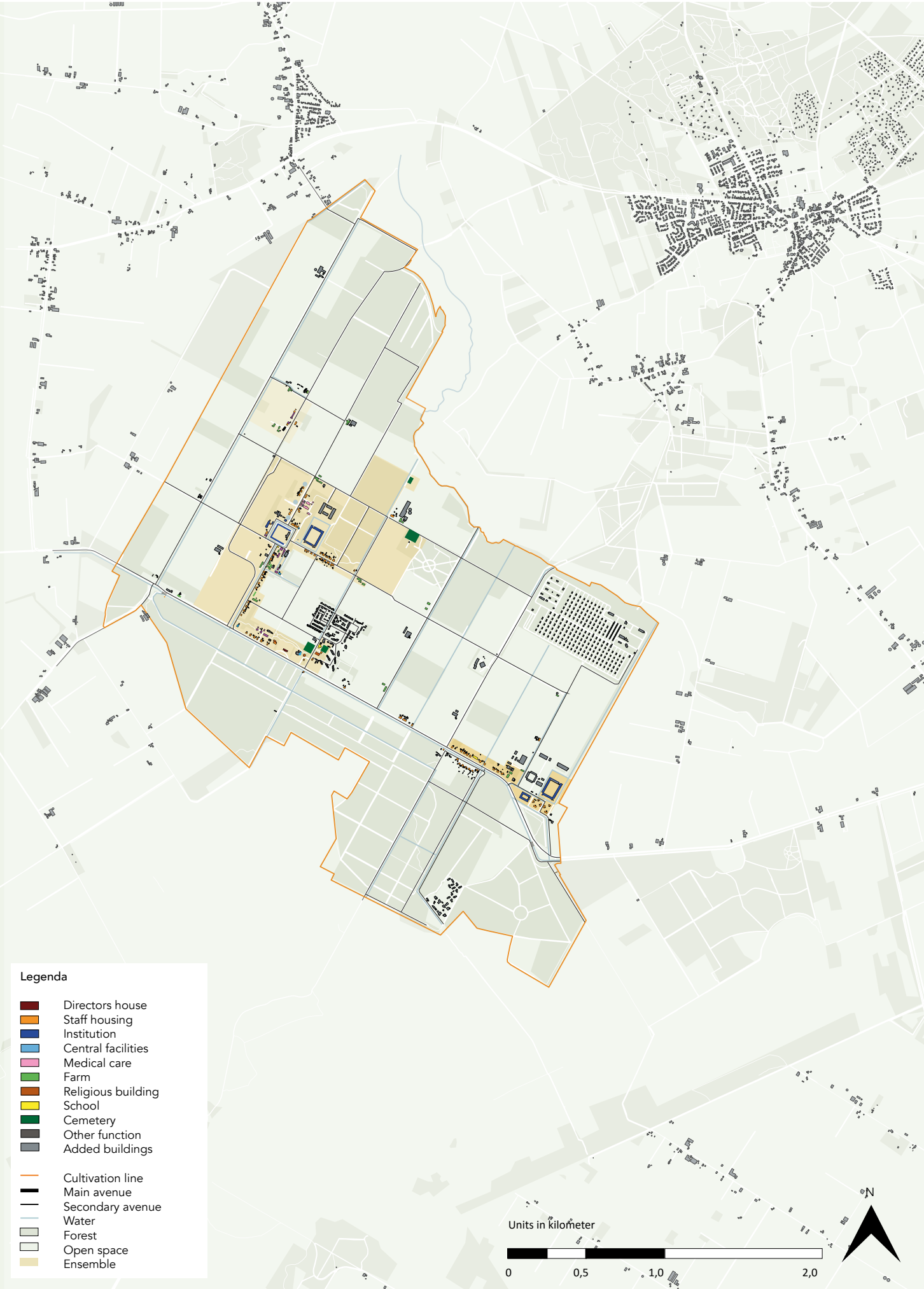


Ref. Nr.	Function	Building Year
2	Farm	1825
3	Farm	1825
26	Farm	1910
30	Staff housing	1908
32	Farm	1890
33	Farm	1890
34	Staff housing	1948
35	Staff housing	1948
36	Staff housing	1919
37	Staff housing	1909
38	Staff housing	1948
40	Farm	1930
41	Farm	1930
42	Farm	1890
43	Farm	1930
44	Farm	1870
45	Staff housing	1889
46	Staff housing	1910
97	Staff housing	1905
98	Medical care	1893
100	Medical care	1893
102	Staff housing	1909
104	Medical care	1893
105	Staff housing	1909
106	Medical care	1893
107	Medical care	1893
108	Staff housing	1893
109	Staff housing	1909
110	Staff housing	1909
111	Staff housing	1909
130	Staff housing	1910
131	Staff housing	1920
132	Staff housing	1910

133	Staff housing	1910
134	Staff housing	1910
135	Staff housing	1910
136	Staff housing	1909
137	Staff housing	1920
138	Staff housing	1920
139	Institution	1900
140	Staff housing	1909
141	Medical care	1867
142	Staff housing	1908
143	Staff housing	1897
150	Institution	1823
153	School	1875
154	Workshop	1900
155	Workshop	1865
156	Workshop	1865
157	Workshop	1885
158	Workshop	1938
159	Workshop	1908
160	Central facilities	1912
161	Central facilities	1925
162	Staff housing	1887
163	Staff housing	1887
164	Institution	1886
165	Institution	1860
166	Staff housing	1889
167	Institution	1940
168	Staff housing	1938
169	Workshop	1891
187	Institution	1960



162. Staff housing



Veenhuizen

Ref. Nr.	Function	Building Year
1	farm	1930
2	farm	1900
3	farm	1890
5	staff housing	1910
6	staff housing	1948
7	staff housing	1948
8	staff housing	1948
9	staff housing	1948
10	staff housing	1948
11	farm	1890
12	farm	1890
13	farm	pre 1852
15	lock	1878
16	farm	1925
17	farm	1925
18	central facilities	1883
19	staff housing	1948
20	staff housing	1948
21	staff housing	1948
22	farm	1890
24	farm	1890
26	farm	1910
27	staff housing	1904
28	staff housing	1908
29	staff housing	1908
30	staff housing	1908
31	staff housing	1907
32	farm	1890
33	farm	1890
34	staff housing	1948
35	staff housing	1948
36	staff housing	1919
37	staff housing	1909
38	staff housing	1948
39	central facilities	1925
40	farm	1930
41	farm	1930
42	farm	1890
43	farm	1930
44	farm	1870
45	staff housing	1889
46	staff housing	1910
48	staff housing	1953
49	central facilities	1900 - 1930
50	farm	1925
51	farm	1925
52	central facilities	1900
53	staff housing	1953
54	staff housing	1953
55	staff housing	1889
56	staff housing	1953
57	staff housing	1901
58	staff housing	1953
59	staff housing	1909
60	staff housing	1953

61	staff housing	1901
62	staff housing	1901
63	staff housing	1953
64	school	1903
65	staff housing	1930
66	staff housing	1930
67	staff housing	1930
68	staff housing	1930
69	staff housing	1875
70	staff housing	1880
71	staff housing	1880
72	staff housing	1900
73	staff housing	1919
74	staff housing	1919
75	staff housing	1900
76	staff housing	1850
77	religious building	1825
78	central facilities	1922
79	staff housing	1859
80	religious building	1839
81	staff housing	1870
82	staff housing	1908
83	workshop	1855
84	workshop	1860
85	workshop	1929
86	workshop	1903
87	workshop	1897
88	staff housing	1870
89	staff housing	1904
90	staff housing	1909
91	staff housing	1909
94	staff housing	1879
96	institution	1886
97	staff housing	1905
98	central facilities	1893
99	staff housing	1893
100	central facilities	1893
101	central facilities	1895
102	staff housing	1909
103	central facilities	1893
104	staff housing	1893
105	staff housing	1909
106	staff housing	1893
107	staff housing	1893
108	staff housing	1893
109	staff housing	1909
110	staff housing	1909
111	staff housing	1909
112	farm	1930
113	farm	1930
114	farm	1930
115	farm	1930
116	farm	1930
117	farm	1930
118	staff housing	1908
119	religious building	1893
120	staff housing	1908
121	school	1826
122	farm	1890

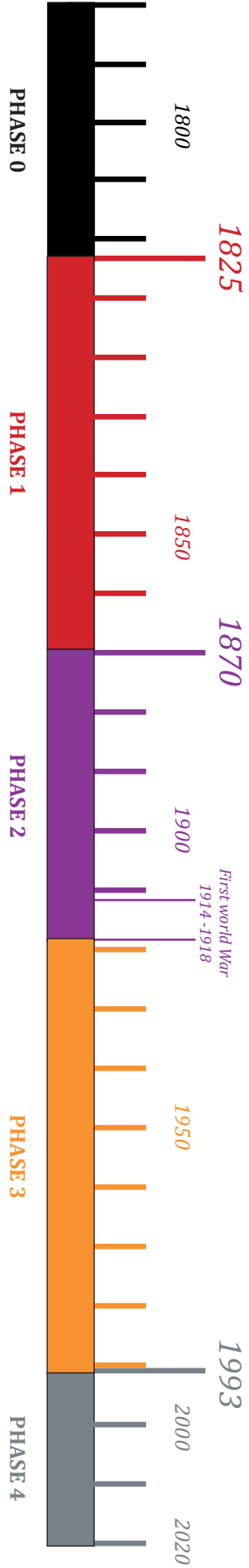
123	farm	1890
124	farm	1890
126	farm	1880
127	farm	1970's
128	staff housing	1948
129	staff housing	1887
130	staff housing	1910
131	staff housing	1920
132	staff housing	1910
133	staff housing	1910
134	staff housing	1910
135	staff housing	1910
136	staff housing	1909
137	staff housing	1920
138	staff housing	1920
139	institution	1900
140	staff housing	1909
141	central facilities	1867
142	staff housing	1908
143	staff housing	1897
144	staff housing	1901
145	staff housing	1901
146	staff housing	1901
147	staff housing	1901
148	staff housing	1901
149	institution	1903
150	institution	1823
152	farm	1937
153	school	1875
154	workshop	1900
155	workshop	1865-1870
156	workshop	1865
157	workshop	1885
158	workshop	1938
159	workshop	1908
160	central facilities	1912
161	central facilities	1925
162	staff housing	1887
163	staff housing	1887
164	institution	1950
165	institution	1860
166	staff housing	1889
167	institution	1940
168	staff housing	1938
169	workshop	1891
170	central facilities	1920
171	workshop	1839
172	workshop	1839
173	staff housing	1884
174	staff housing	1850
175	staff housing	1948
176	staff housing	1901
177	institution	1885
179	farm	1723
180	staff housing	1850
181	farm	1890
182	farm	1870
184	farm	1890
185	central facilities	1890

186	farm	1845
187	institution	1980's
188	institution	1980's
189	central facilities	1960's
190	central facilities	1960's
191	central facilities	1950's
192	lock	1879
193	central facilities	1901
194	staff housing	1880
196	workshop	1960
199	workshop	1960
200	staff housing	1880
202	staff housing	1890

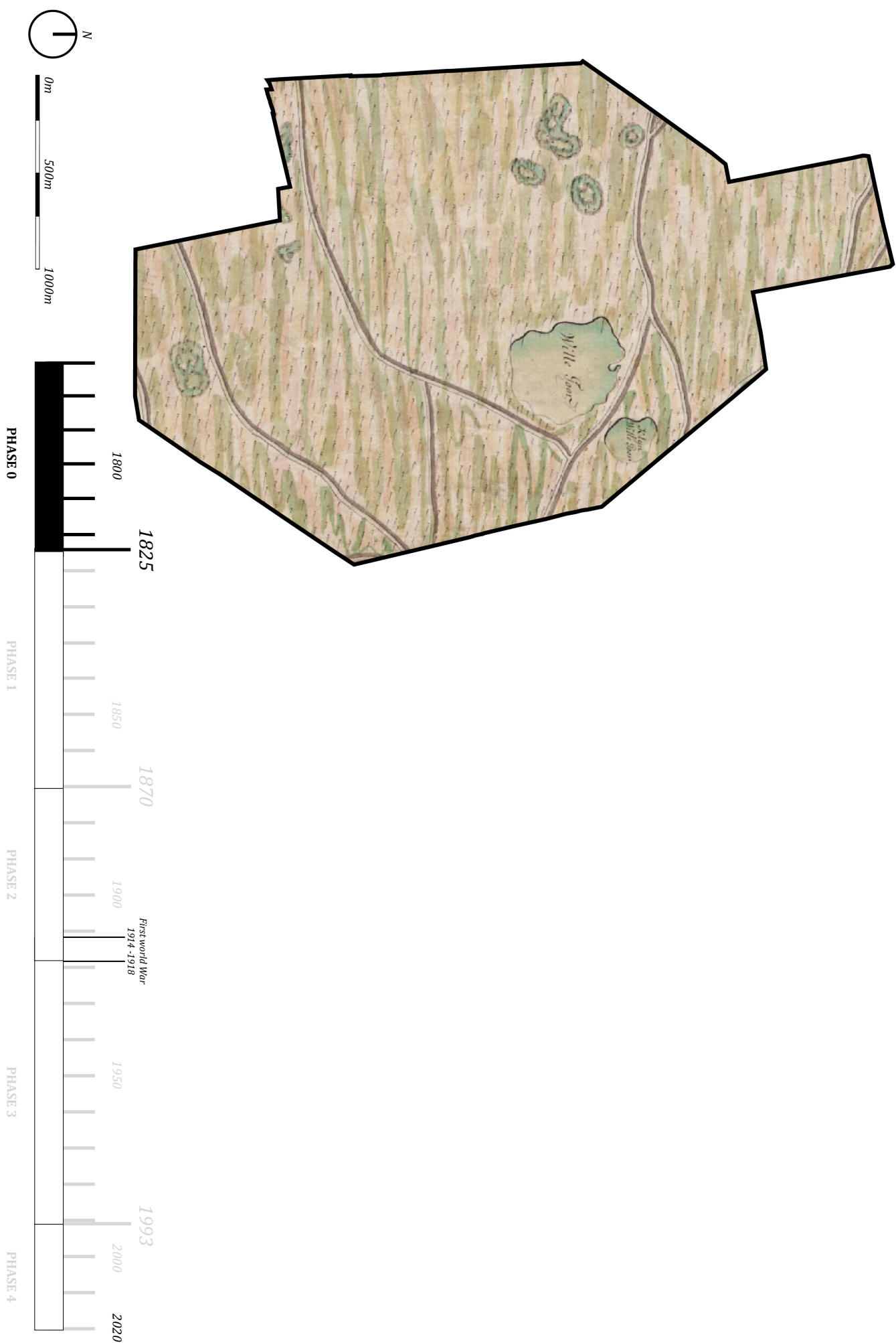
JOURNEY THROUGH TIME COLONY MERKSPLAS 1825 - PRESENT



TRANSFORMATION OF COLONY MERKSPLAS OVER THE YEARS

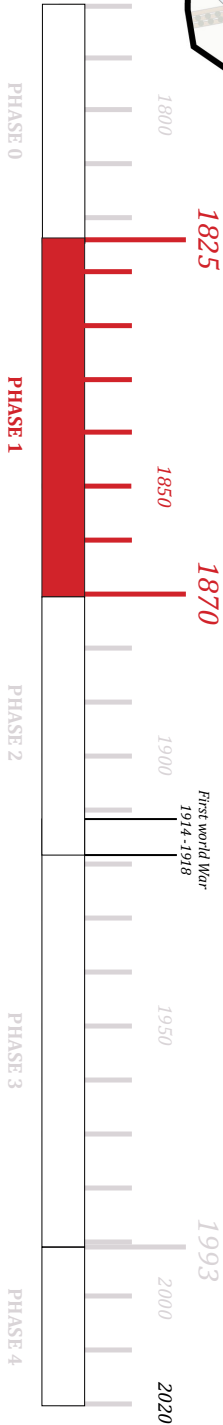
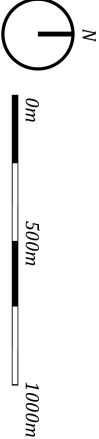
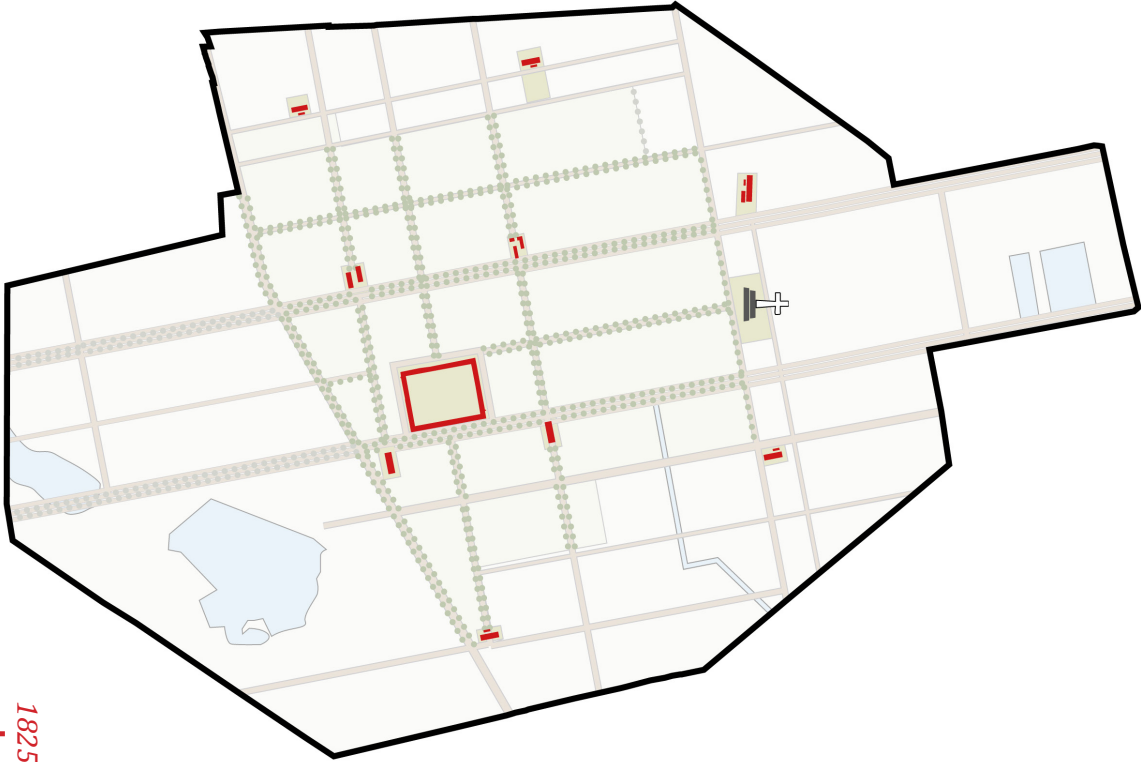


PHASE 0 1780- 1825 DEVELOPMENT EVOLUTION



PHASE 1 1825 - 1870 DEVELOPMENT EVOLUTION

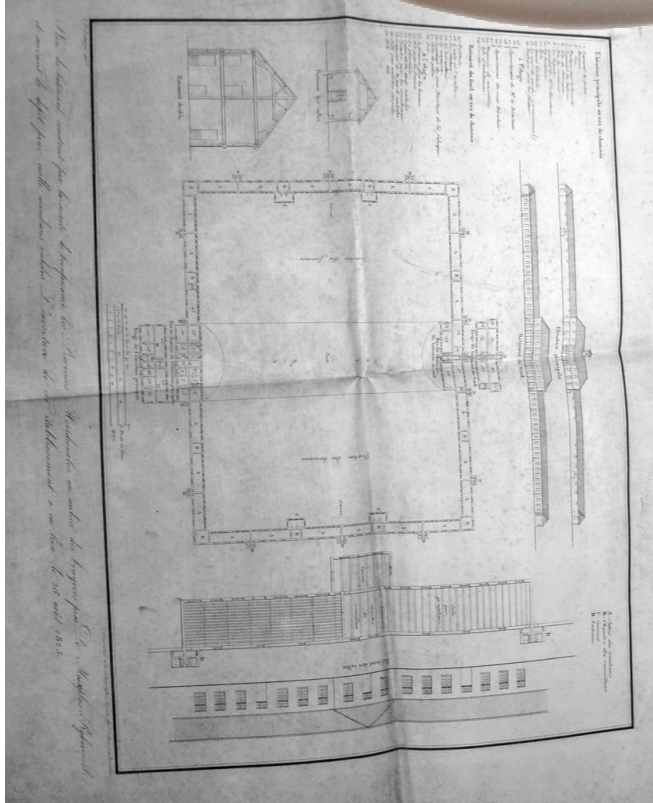
■ first buildings



PHASE 1 1825 - 1870 FUNCTIONAL EVOLUTION



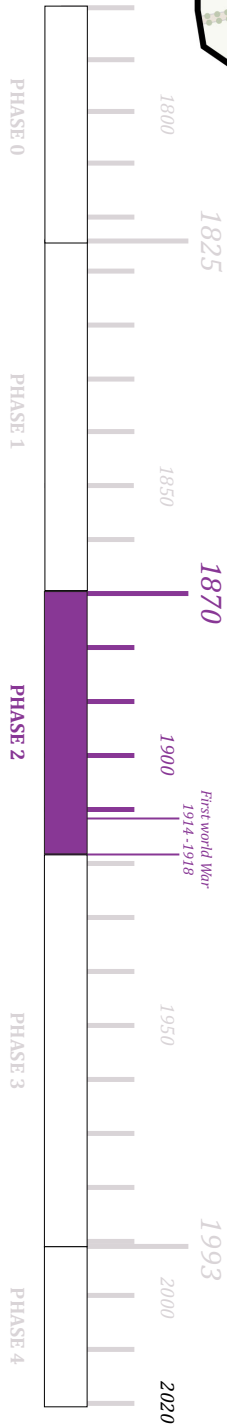
- institution
- farm
- workshop
- cemetery



1. floorplan institution Merksplas

PHASE 2 1870 - 1918 DEVELOPMENT EVOLUTION

- buildings (1825 - 1870)
- buildings (1870 - 1918)
- ▤ demolished buildings from previous period



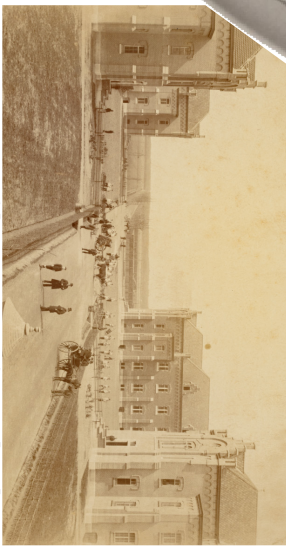
PHASE 2 1870 -1918 FUNCTIONAL EVOLUTION



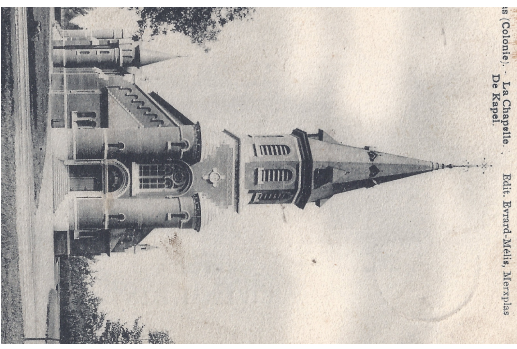
- government- / director house
- cemetery
- tramstop building
- staff houses
- institution
- central facilities
- farm
- workshop
- school
- medical care
- religious building



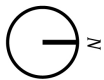
1. farm Merksplas



2. institution (dormitories) Merksplas



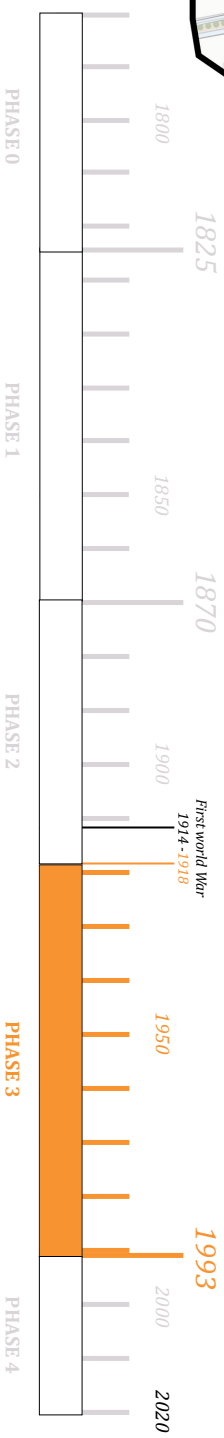
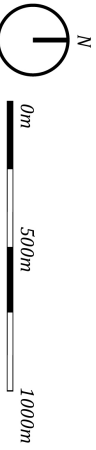
3. chapel Merksplas



0m 1000m 2000m

PHASE 3 1918 - 1993 DEVELOPMENT EVOLUTION

- buildings (1822 - 1870)
- buildings (1870 - 1918)
- buildings (1918 - 1993)
- demolished buildings from previous period



PHASE 3 1918 - 1993 FUNCTIONAL EVOLUTION



- function not related to the Colony
- government- / director house
- cemetery
- tramstop building
- staff houses
- institution
- central facilities
- farm
- workshop
- school
- medical care
- religious building



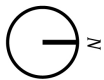
1. chapel Merksplas



2. institution Merksplas



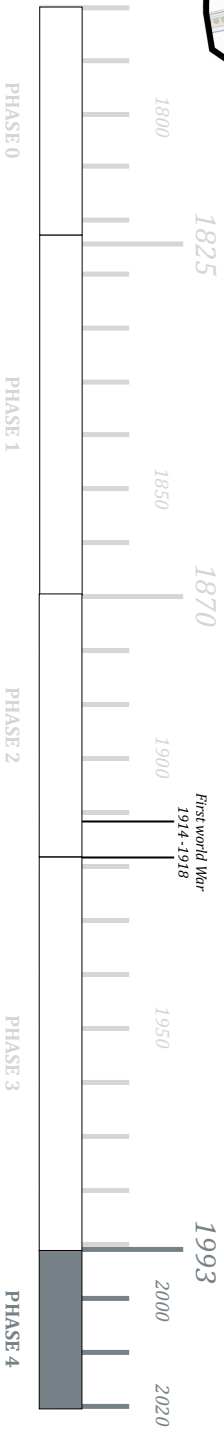
3. hospital Merksplas



0m 1000m 2000m

PHASE 4 1993 PRESENT DEVELOPMENT EVOLUTION

- buildings (1822 - 1870)
- buildings (1870 - 1918)
- buildings (1918 - 1993)
- buildings (1993 - present)
- demolished buildings from previous period



PHASE 4 1993 - PRESENT FUNCTIONAL EVOLUTION

 function related to the Colony
 function not related to the Colony



1. staff house



2. chapel Merksplas

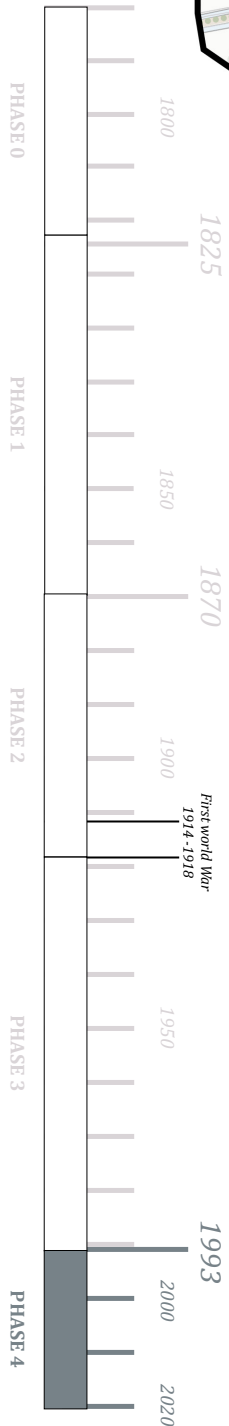
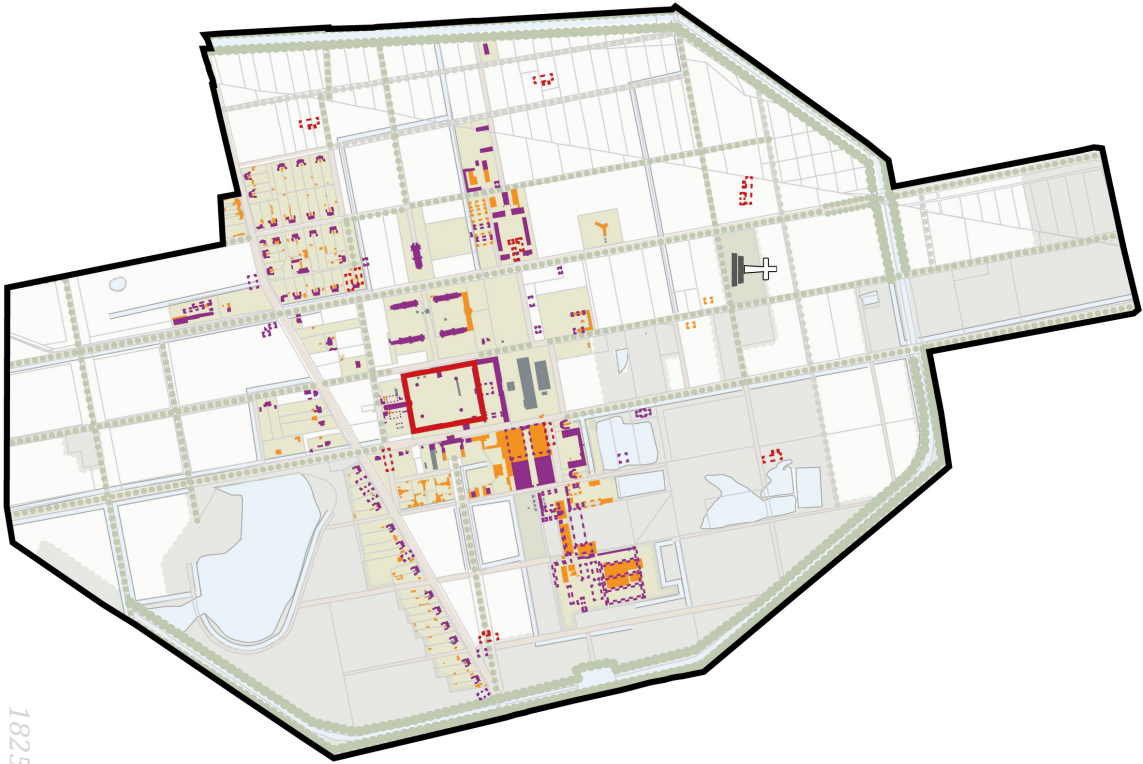


3. farm Werksplas



PHASE 4 1993 - PRESENT DEVELOPMENT EVOLUTION + DEMOLISHED BUILDINGS

- buildings (1822 - 1870)
- demolished buildings (1822 -1870)
- buildings (1870 - 1918)
- demolished buildings (1870 - 1918)
- buildings (1918 - 1993)
- demolished buildings (1918 - 1993)
- buildings (1993 - present)



Merksplas

Ref. Nr.	Year of build	Historical use
1	1878-1880	Farm - Living stable, house, storage, pigsty
2	1878-1880	Farm - Living stable, house, storage, sheep stable
3	1878-1880	Farm - horse stable
4	1878-1880	Farm - cow shed
5	1878-1880	Farm - granary
6	1878-1880	Farm - calf shed and grain storage in the attic
7	1878-1880	Farm - oxen stables and grain storage in the attic
8	after 1918	Farm - hangar
9	1893	Farm - Potato cellars - consisting of three travées
10	1893	Farm - outbuildings potato cellars - storage
11	1905	Farm - open shed - storage of hay and straw
12	1905	Farm - open shed - storage of hay and straw
13	1905	Farm - open shed - storage of hay and straw
14	1890-1899	Farm - Quarantine stable
15	1878-1880	Farm - observation post
16	ca 1897	Chapel
17	ca 1880-1905	farm storage
18	1882	institution - dormitories (northeast wing)
	na 1918	institution - dormitories (connecting wing north)
	1878	institution - dormitories (north/east)
	1878	institution - dormitories (south/east)
	1882	institution - dormitories (south/west)
23	1824, 1882, 1905	institution
	1905	institution - central building - outer north wing
	1891	institution - central building - inner north wing
	1891	institution - central building - north/east wing
	1891	institution - central building - south/east wing
	1891	institution - central building - east/south wing
	1891	institution - central building - west/south wing
	1891	institution - central building - cell complex - southern south wing
31	1905	workshop - central warehouse - storage
32	1905	workshop
40	1891	staff housing - post and telegraph
41	1891	staff housing - post and telegraph
46	1885-1899	tannery
54	ca 1880-1899	staff housing
55	ca 1880-1899	staff housing
56	ca 1880-1899	staff housing
57	ca 1880-1899	staff housing
58	ca 1936	staff housing
59	ca 1936	staff housing
60	ca 1936	staff housing
61	ca 1936	staff housing
62	ca 1936	staff housing
63	ca 1936	staff housing
64	ca 1936	staff housing
65	ca 1936	staff housing
66	ca 1936	staff housing
67	ca 1936	staff housing
68	ca 1915	staff housing - head
69	ca 1903	staff housing - director
70	ca 1915	staff housing - head
71	ca 1882	staff housing - director
72	1885-1916	staff housing
73	1885-1916	staff housing
74	1885-1916	staff housing
75	1885-1916	staff housing
76	1885-1916	staff housing
77	1885-1916	staff housing
78	1885-1916	staff housing
79	1885-1916	staff housing
80	1885-1916	staff housing
81	1885-1916	staff housing
82	1885-1916	staff housing
83	1885-1916	staff housing
84	ca 1915	staff housing - head
85	ca 1915	staff housing - head
86	1885-1916	staff housing
87	1885-1916	staff housing
88	1885-1916	staff housing
89	1885-1916	staff housing
90	1885-1916	staff housing
91	1885-1916	staff housing
92	ca 1903	staff housing - head
93	ca 1905	staff housing - head
94	ca 1905	staff housing - head
95	ca 1905	staff housing - head
96	ca 1931	staff housing
97	ca 1931	staff housing
98	ca 1931	staff housing
99	ca 1931	staff housing
100	ca 1931	staff housing

101	ca 1931	staff housing
102	ca 1897	staff housing - director
103	ca 1897	staff housing - head
104	ca 1882	staff housing - director
105	ca 1882	staff housing - director
106	1885-1916	staff housing
107	1885-1916	staff housing
108	1885-1916	staff housing
109	1885-1916	staff housing
110	ca 1889	staff housing - head
111	ca 1889	staff housing - head
112	1885-1916	staff housing
113	1885-1916	staff housing
114	1885-1916	staff housing
115	1885-1916	staff housing
116	1885-1916	staff housing
117	1885-1916	staff housing
118	1885-1916	staff housing
119	1885-1916	staff housing
120	1885-1916	staff housing
121	1885-1916	staff housing
122	1885-1916	staff housing
123	1885-1916	staff housing
124	1885-1916	staff housing
125	1885-1916	staff housing
126	1885-1916	staff housing
127	1885-1916	staff housing
128	1885-1916	staff housing
129	1885-1916	staff housing
130	1885-1916	staff housing
131	1885-1916	staff housing
132	1885-1916	staff housing
133	1885-1916	staff housing
134	1885-1916	staff housing
135	1885-1916	staff housing
136	1885-1916	staff housing
137	1885-1916	staff housing
138	1891	school
139	1891	staff housing
140	1885-1916	staff housing
141	1885-1916	staff housing
142	1885-1916	staff housing
143	1885-1916	staff housing
144	1885-1916	staff housing
145	1885-1916	staff housing
146	1885-1916	staff housing
147	1885-1916	staff housing
148	ca 1885-1890	staff housing - head
149	ca 1885-1890	workshop - tube
150	ca 1915	staff housing - head
151	ca 1915	staff housing - head
152	ca 1931	staff housing - head
153	ca 1903	staff housing - director
154	1825	cemetery